



BANK OF TANZANIA

CONSOLIDATED ZONAL ECONOMIC PERFORMANCE REPORT FOR THE YEAR ENDING JUNE 2022

Volume 7 No. 2



Consolidated Zonal Economic Performance Report

BANK OF TANZANIA

CONSOLIDATED ZONAL ECONOMIC PERFORMANCE REPORT FOR THE YEAR ENDING JUNE 2022

© Bank of Tanzania.

All rights reserved. This report is intended for general information only and not to serve as financial or other advice. No content of this publication may be quoted or reproduced in any form without fully acknowledging the Bank of Tanzania Consolidated Zonal Economic Performance Report as the source. The Bank of Tanzania has taken every precaution to ensure accuracy of information and therefore, shall not be liable to any person for inaccurate information or opinion contained in this publication.

For any inquiry please contact:
Director of Economic Research and Policy
Bank of Tanzania, 16 Jakaya Kikwete Road 40184
P.O. Box 2302, Dodoma, Tanzania
Email: botcommunications@bot.go.tz

This report is available at <http://www.bot.go.tz>

ISSN 2546-2008



Consolidated Zonal Economic Performance Report

Contents

Executive Summary	3
1.0 ECONOMIC DEVELOPMENTS	5
1.1 Gross Domestic Product.....	5
1.2 Inflation Developments	6
1.3 Wholesale Prices of Food Crops.....	7
1.4 Fuel Pump Prices	8
2.0 FOOD SUPPLY SITUATION	10
2.1 Food Crop Production and Requirements.....	10
2.2 Food Stock.....	11
3.0 SECTORAL PERFORMANCE	12
3.1 Agriculture.....	12
3.2 Manufacturing.....	17
3.3 Mining	18
3.4 Tourism.....	20
3.5 Energy	22
4.0 GOVERNMENT REVENUE PERFORMANCE	24
4.1 Tanzania Revenue Authority Collections	24
4.2 Local Government Revenue Collections	25
5.0 TRADE	26
5.1 Cross Border Trade	26
5.2 Ports Performance.....	26
5.3 Airports Performance.....	27
6.0 FINANCIAL SECTOR DEVELOPMENTS.....	27
6.1 Bank Deposits and Loans	27
6.2 Agent Banking Transactions	29
7.0 STATISTICAL ANNEXES.....	30



Consolidated Zonal Economic Performance Report

List of Tables

Table 1.1: Zonal Gross Domestic Product at Current Market Prices.....	5
Table 1.2: Zonal Nominal GDP Per Capita	5
Table 1.3: Annual Average Headline Inflation.....	6
Table 1.4: Average Wholesale Prices of Selected Food Crops.....	8
Table 1.5: Average Fuel Pump Prices	10
Table 2.1: Food Production and Requirements	11
Table 2.2: Stock of Food Held by National Food Reserve Agency	12
Table 3.1: Cash Crops Procurement.....	13
Table 3.2: Livestock Sold in Registered Markets.....	14
Table 3.3 Hides and Skins	15
Table 3.4: Fish Sold in Registered Markets	16
Table 3.5: Value of Forest Products.....	16
Table 3.6a: Value of Selected Manufactured Commodities by Zone	17
Table 3.6b: Value of Selected Manufactured Commodities by Type	18
Table 3.7a: Value of Selected Mineral Recovery by Type.....	19
Table 3.7b: Value of Mineral Recovery by Zone.....	19
Table 3.8: Value of Minerals Sold at Market Centers	20
Table 3.9: Earnings and Number of Visitors to National Parks	21
Table 3.10: Earnings and Number of Visitors to Museums	21
Table 3.11: Electricity and Natural Gas Production	22
Table 3.12: Electricity Generation by Source.....	23
Table 4.1: TRA Revenue Performance by Zone.....	24
Table 4.2: TRA Revenue Performance by Category	25
Table 4.3: Local Government Revenue Performance by Zone	25
Table 5.1: Cross Border Trade.....	26
Table 5.2: Ports Performance	27
Table 5.3: Airports Performance	27
Table 6.1: Bank Deposits	28
Table 6.2: Bank Loans	28
Table 6.3: Percentage Share of Banks' Lending by Activity as at the end of June 2022.....	29
Table 6.4: Agent Banking Transactions	30



Executive Summary

Nominal Gross Domestic Product (GDP) increased to TZS 161,525.7 billion in 2021, with all zones recording an increase. Activities that accounted for the largest share in nominal GDP were crops, construction, trade, transport, and storage. Lake zone had the largest share of 26 percent, followed by the Northern and Dar es Salaam zones. Relatively, nominal GDP per capita in all zones increased, led by Dar es Salaam zone.

In 2021/22, headline inflation went up in all zones compared with the preceding year, except South Eastern and Southern Highlands zones. The increase was largely on account of a rise in prices of some food items, especially maize and rice.

Production of food crops was 17.4 million tonnes, above the estimated food requirement for 2022/23 of 15.1 million tonnes leading to food Self-Sufficient Ratio (SSR) of 115 percent. Surplus food production was recorded in Southern Highlands, South Eastern and Lake zones. Meanwhile, stock of food held by the National Food Reserve Agency (NFRA) was 141,575.9 tonnes at the end of June 2022.

Performance of selected economic activities improved. Volume of selected cash crops procured was higher than in the preceding season except for tea. Value of livestock traded in registered markets increased by 7.4 percent to TZS 2,054.2 billion associated with demand-supply mismatch. Similarly, earnings from fish sold improved due to volume and unit price increase associated with recovery of hospitality industry, which was negatively affected by COVID-19 pandemic. Value of forest products also increased, attributed to a rise in demand for timber and poles.

The value of manufactured goods recorded an annual growth of 17 percent to TZS 12,628.3 billion with much of the increase recorded in production of beverages, cement, rolled steel, sugar, vegetable oil, textile, ceramics and mattresses. In the mining sector, the value of mineral recovery also increased mainly driven by coal and diamond.

Tourism activities continued to improve largely explained by relaxation of international travel restrictions, recovery of global economy from the effects of COVID-19 pandemic, and continued government efforts to promote tourism activities. The volume of electricity generated went up by 11.8 percent following increased capacity utilization of gas-fired power plants. Production of natural gas also increased, partly due to a rise in demand by Tanzania Electric Supply Company Limited (TANESCO) gas fired power plants.



Consolidated Zonal Economic Performance Report

Central government tax revenue reached TZS 21,926.9 billion equivalent to 99.5 percent of the annual target, with taxes on local goods and services contributing 41.5 percent of the total. Good performance in all tax categories reflected improved tax administration measures and compliance following continuous public awareness to enhance collection of taxes, intensified use of electronic fiscal devices and improving economic activities. Local Government Authorities collected TZS 902.4 billion, 12.3 percent above the annual target, on account of enhanced use of electronic payment systems and improved economic activities.

Cross border trade registered a surplus, which was 22.6 percent higher than in the preceding year, driven by exports of goods, particularly unrefined gold, live cattle, rough diamond, cotton yarn, sunflower, fish fillets, maize and cement. Volume of cargo handled through major sea and lake ports increased by 14.9 percent to 19.8 million tonnes resulting from infrastructure improvement and recovery of the global supply chain. Airport operations continued to register improvements in the number of aircraft movements and passengers; and volume of cargo handled.

In respect of banks operations, deposits mobilization increased across all zones, save for Southern Highlands. This improvement was associated with increased use of agent banking services and mobile banking platforms. Likewise, loans extended to various economic activities grew, with personal and trade activities dominating the loan portfolio, representing 51.1 percent of outstanding loans.



1.0 ECONOMIC DEVELOPMENTS

1.1 Gross Domestic Product

Nominal Gross Domestic Product (GDP) increased to TZS 161,525.7 billion in 2021 from TZS 151,166.3 billion recorded in the preceding year. Activities that accounted for the largest share were crops, construction, trade, transport and storage. Lake zone had the largest share of nominal GDP at 26 percent, followed by Northern and Dar es Salaam zones (**Table 1.1**).

Table 1.1: Zonal Gross Domestic Product at Current Market Prices

Zone	2018	2019	2020 ^r	2021 ^p	Millions of TZS
					Percentage change
Central	17,154,627.1	18,789,828.8	20,420,920.2	21,710,358.2	6.3
Dar es Salaam	22,521,298.0	23,858,608.2	25,723,714.6	27,486,551.1	6.9
Lake	33,363,850.6	36,218,567.3	39,232,399.4	41,970,981.0	7.0
Northern	22,094,290.5	24,042,418.4	25,957,287.8	27,716,131.0	6.8
South Eastern	13,463,232.9	14,598,143.4	15,876,208.7	16,964,199.3	6.9
Southern Highlands	20,446,602.2	22,134,288.4	23,955,852.4	25,677,538.0	7.2
Tanzania Mainland	129,043,901.3	139,641,854.5	151,166,383.1	161,525,758.6	6.9

Source: National Bureau of Statistics

Note: r denotes revised data; and p, provisional data

Correspondingly, improvement was also notable in nominal GDP per capita, with Dar es Salaam zone registering the highest nominal GDP per capita, followed by Southern Highlands and Northern zones (**Table 1.2**).

Table 1.2: Zonal Nominal GDP Per Capita

Zone	2018	2019	2020 ^r	2021 ^p	TZS
					Percentage change
Central	1,792,045.4	1,904,986.9	2,009,159.3	2,072,688.4	3.2
Dar es Salaam	4,375,557.0	4,522,688.8	4,762,051.2	4,973,466.9	4.4
Lake	1,896,835.8	1,981,895.9	2,065,917.7	2,126,448.6	2.9
Northern	2,778,403.6	2,945,815.2	3,098,391.3	3,222,674.0	4.0
South Eastern	2,562,894.4	2,719,589.3	2,893,966.2	3,025,249.6	4.5
Southern Highlands	2,877,740.5	3,022,853.5	3,174,488.1	3,301,402.7	4.0
Tanzania Mainland	2,452,405.6	2,573,324.4	2,701,038.2	2,798,224.2	3.6

Source: National Bureau of Statistics

Note: r denotes revised data; and p, provisional data



1.2 Inflation Developments

During 2021/22, headline inflation increased in all zones compared with the preceding year, save for South Eastern and Southern Highlands zones (**Table 1.3** and **Chart 1.1**). This outturn was largely on account of increase in average prices of some food items, especially maize and rice. The decline in inflation in South Eastern zone was due to a fall in prices of some food items particularly, beans and round potatoes, while in Southern Highlands zone it was owing to decrease in the cost of housing.

Table 1.3: Annual Average Headline Inflation

	National	Central	Dar es Salaam	Lake	Northern	South Eastern	Southern Highlands	Percent
2017/18	4.3	4.4	2.4	4.6	4.9	7.2	2.5	
2018/19	3.2	0.1	2.3	2.8	2.1	4.8	4.8	
2019/20	3.5	0.8	3.6	2.9	2.8	4.9	3.9	
2020/21	3.3	1.0	2.9	2.3	2.1	6.0	6.6	
2021/22	4.0	2.3	3.5	6.7	2.7	3.7	4.2	

Source: National Bureau of Statistics and Bank of Tanzania computations

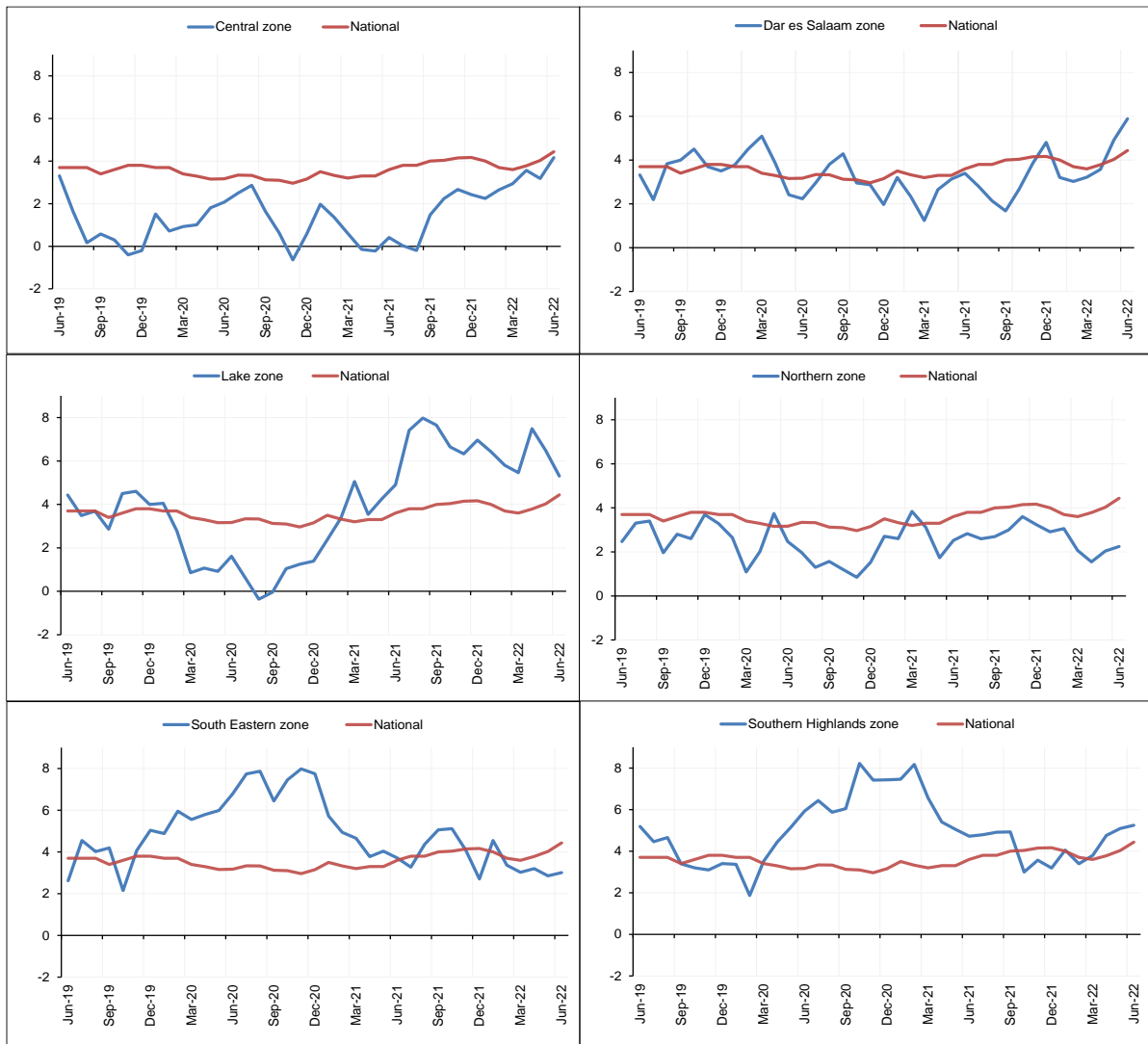
Note: Inflation is computed using different weights across zones hence zonal average inflation may not be the same as the national inflation



Consolidated Zonal Economic Performance Report

Chart 1.1: Year-on-Year Headline Inflation

Percent



Source: National Bureau of Statistics and Bank of Tanzania computations

1.3 Wholesale Prices of Food Crops

In 2021/22, average wholesale prices of selected food crops were higher than prices recorded in the preceding year, save for beans and round potatoes (Table 1.4). This was partly due to increased food demand from neighboring countries and transportation costs largely due to a rise in domestic fuel pump prices.



Consolidated Zonal Economic Performance Report

Table 1.4: Average Wholesale Prices of Selected Food Crops

		TZS per 100 kg						
Year		Central	Dar es Salaam	Lake	Northern	South Eastern	Southern Highlands	Average
2019/20 ^f	Beans	180,603.3	227,571.8	173,355.6	172,569.8	207,387.9	179,199.3	190,114.6
	Bulrush millet	88,841.3	106,536.7	n.a	95,126.8	n.a	n.a	96,834.9
	Finger millet	123,954.9	133,654.1	n.a	102,815.0	143,244.5	152,000.0	131,133.7
	Maize	64,406.5	73,506.6	68,514.1	72,606.4	77,295.6	50,346.1	67,779.2
	Rice	165,615.6	188,402.0	156,150.5	183,723.0	192,256.7	164,242.8	175,065.1
	Round potatoes	65,457.9	70,003.3	84,263.4	76,634.4	89,731.0	49,320.9	72,568.5
	Sorghum	94,538.7	102,226.8	97,593.1	86,795.5	119,837.4	152,980.0	108,995.2
	Wheat	n.a	125,509.2	n.a	115,466.2	n.a	162,000.0	134,325.1
2020/21 ^r	Beans	199,707.9	226,471.9	173,501.5	188,035.9	210,416.1	171,652.8	194,964.4
	Bulrush millet	86,786.8	90,430.6	n.a	95,719.5	n.a	n.a	90,979.0
	Finger millet	141,815.3	138,917.6	n.a	129,676.5	147,970.6	166,875.0	145,051.0
	Maize	52,492.1	55,720.0	56,638.9	53,627.3	61,539.6	43,520.8	53,923.1
	Rice	144,106.2	177,109.8	121,029.8	150,738.9	168,071.3	155,631.9	152,781.3
	Round potatoes	72,913.8	70,712.6	83,892.2	71,589.1	86,061.7	44,667.0	71,639.4
	Sorghum	96,005.8	96,969.2	98,090.2	83,456.8	131,036.6	155,000.0	110,093.1
	Wheat	158,750.0	126,771.7	n.a	105,163.8	n.a	168,333.3	139,754.7
2021/22 ^p	Beans	190,570.2	220,861.9	171,968.8	171,677.8	198,128.7	188,315.7	190,253.9
	Bulrush millet	93,410.1	84,897.7	n.a	96,241.4	n.a	n.a	91,516.4
	Finger millet	155,705.4	158,163.6	n.a	154,103.4	178,753.0	169,034.9	163,152.1
	Maize	53,094.0	66,468.0	61,769.3	61,223.8	59,726.8	54,113.2	59,399.2
	Rice	170,957.1	184,922.6	154,941.0	178,395.7	182,277.4	164,587.7	172,680.2
	Round potatoes	79,207.7	64,953.4	80,929.2	71,962.5	74,731.8	54,000.2	70,964.1
	Sorghum	94,083.4	95,809.6	110,588.5	92,518.6	122,963.1	163,921.8	113,314.2
	Wheat	164,430.6	158,828.0	n.a	138,725.4	n.a	171,189.3	158,293.3

Source: Ministry of Investment, Industry, and Trade, Regional Authorities and Bank of Tanzania computations
 Note: n.a denotes not available; p, provisional data, and r; revised data

1.4 Fuel Pump Prices

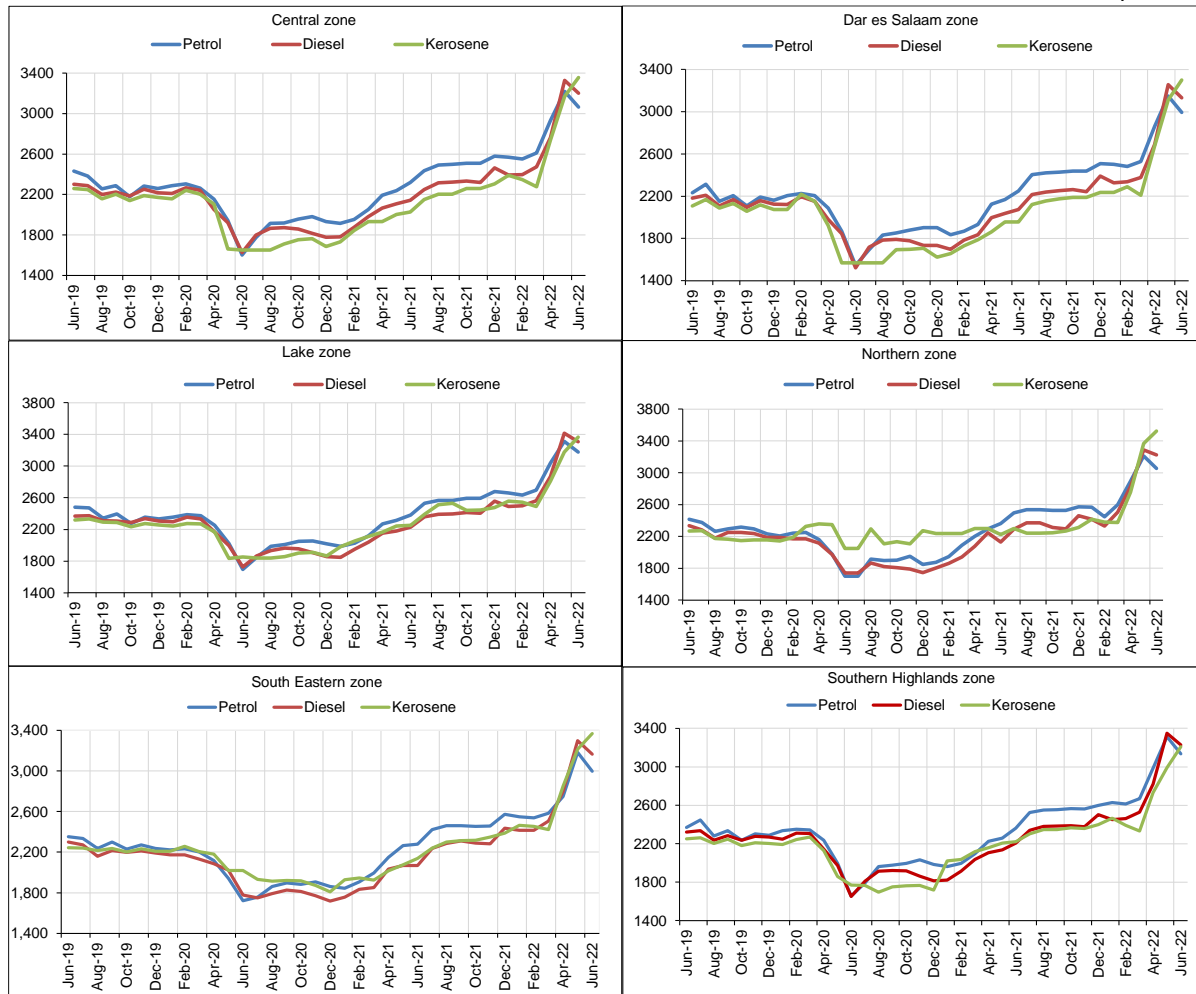
Average retail pump prices of petroleum products increased across all zones (**Table 1.5** and **Chart 1.4**). This outturn was largely on account of oil supply disruption following the outbreak of war in Ukraine and a rise in global demand resulting from recovery of world economies from the effects of COVID-19 pandemic. Pump prices of petrol and diesel reached all-time high in May 2022.



Consolidated Zonal Economic Performance Report

Chart 1.4: Average Fuel Pump Prices by Zone

TZS per litre



Source: National Bureau of Statistics and Bank of Tanzania computations



Consolidated Zonal Economic Performance Report

Table 1.5: Average Fuel Pump Prices

Zone	Type	2018/19	2019/20	2020/21	2021/22	TZS per litre
						Percentage change, 2020/21 to 2021/22
Central	Petrol	2,381.06	2,183.77	2,012.48	2,664.49	32.4
	Diesel	2,334.84	2,141.05	1,912.87	2,546.93	33.1
	Kerosene	2,283.85	2,094.26	1,807.47	2,471.11	36.7
Dar es Salaam	Petrol	2,291.65	2,105.92	1,935.92	2,595.89	34.1
	Diesel	2,295.65	2,056.50	1,829.95	2,476.74	35.3
	Kerosene	2,205.82	2,011.42	1,733.20	2,407.05	38.9
Lake	Petrol	2,453.97	2,271.54	2,089.07	2,753.82	31.8
	Diesel	2,406.34	2,232.76	1,990.44	2,638.15	32.5
	Kerosene	2,192.61	2,193.53	2,001.78	2,644.39	32.1
Northern	Petrol	2,320.84	2,192.48	1,997.68	2,663.40	33.3
	Diesel	2,289.40	2,145.17	1,901.97	2,557.05	34.4
	Kerosene	2,276.40	2,206.45	2,207.40	2,535.51	14.9
South Eastern	Petrol	2,318.39	2,170.65	1,966.93	2,618.91	33.1
	Diesel	2,274.70	2,134.36	1,856.62	2,536.42	36.6
	Kerosene	2,240.58	2,186.01	1,949.67	2,556.67	31.1
Southern Highlands	Petrol	2,318.39	2,233.85	2,053.33	2,724.80	32.7
	Diesel	2,274.70	2,189.42	1,954.68	2,600.71	33.1
	Kerosene	2,240.58	2,146.78	1,935.30	2,520.32	30.2
Average	Petrol	2,363.88	2,215.29	2,030.30	2,692.64	32.6
	Diesel	2,322.46	2,173.26	1,929.89	2,581.14	33.7
	Kerosene	2,238.49	2,161.30	1,969.83	2,549.72	29.4

Source: National Bureau of Statistics

2.0 FOOD SUPPLY SITUATION

2.1 Food Crop Production and Requirements

Food crops production in 2021/22 crop season was 17.4 million tonnes, of which 9.5 million tonnes were cereals and 7.9 million tonnes were non-cereals. The level of production was lower by 1 million tonnes compared with 2020/21 crop season, owing to delayed and uneven distribution of rain coupled with inadequate application of fertilizers due to price increase. The rise in price was on account of high global demand for fertilizer following resurgence of economic activities after COVID-19 associated lockdowns. Notwithstanding, food crop production was above the estimated requirement for 2022/23 of 15.1 million tonnes leading to food Self-Sufficient Ratio (SSR) of 115 percent. Excess food production was recorded in all zones except Dar es Salaam¹ (Table 2.1).

¹ Most of food consumed in Dar es Salaam zone is sourced from surplus food producing regions.



Consolidated Zonal Economic Performance Report

Table 2.1: Food Production and Requirements

	Food production			Food requirements 2022/23	Excess (+)/ Deficit (-)	Tonnes Self- sufficiency ratio
	2019/20	2020/21	2021/22			
	Central	3,053,001	3,104,778			
Dar es Salaam	41,297	9,670	4,450	1,812,636	-1,808,186	0
Lake	5,633,838	5,793,183	5,637,278	4,655,917	981,361	121
Northern	2,447,481	2,571,984	2,382,046	2,276,934	105,112	105
South Eastern	2,270,626	2,444,881	2,301,654	1,503,155	798,499	153
Southern Highlands	4,296,145	4,500,754	4,213,358	2,194,724	2,018,634	192
Total	17,742,388	18,425,250	17,403,880	15,073,865	2,330,015	115

Source: Ministry of Agriculture

Note: SSR of between 0 and 99 percent implies inadequate food production; 100 and 119 percent, adequate; and 120 and above, surplus food production

2.2 Food Stock

The stock of food held by the National Food Reserve Agency (NFRA), mainly maize grain stood at 141,575.9 tonnes at the end of June 2022, compared with 107,357.4 tonnes recorded in the similar period in the preceding year (**Table 2.2**). The Agency purchased 110,713.3 tonnes of maize grain and 58.7 tonnes of sorghum and sold 76,580.1 tonnes of food to traders and World Food Program. Further, the stock of food held by Cereals and other Produce Board (CPB) for commercial purposes was 28,078 tonnes, with maize accounting for 13.5 percent of the total stock².

² The stock of food held by CPB includes maize, millet, beans, paddy, cashew nuts, rice, maize flour, maize grits, sunflower oil and wheat flour.



Consolidated Zonal Economic Performance Report

Table 2.2: Stock of Food Held by National Food Reserve Agency

Period	Zone	Opening balance	Quantity			Closing balance
			Quantity purchased	transferred in/out*	Quantity released	
2019/20	Central	5,371.1	1,120.9	-2,000.0	1,680.0	2,812.0
	Dar es Salaam	500.0	3,035.1	0.0	106.6	3,428.5
	Lake	6,225.4	263.3	1,897.3	3,796.5	4,589.5
	Northern	2,296.0	5,954.7	4,001.0	6,870.0	5,381.7
	South Eastern	20,418.2	3,345.9	-11,058.9	3,000.0	9,705.1
	Southern Highlands	32,525.1	7,254.6	11,031.8	24,030.3	26,781.2
	Total	67,335.9	20,974.5	3,871.1	39,483.4	52,698.0
2020/21	Central	2,812.0	3,264.0	0.0	1,209.0	4,867.0
	Dar es Salaam	3,428.5	4,216.0	0.0	0.0	7,644.5
	Lake	4,589.5	2,422.4	0.0	227.1	6,784.8
	Northern	5,381.7	4,950.0	0.0	2,749.0	7,582.7
	South Eastern	9,705.1	14,299.8	-2,941.1	0.0	21,063.9
	Southern Highlands	26,781.2	29,661.2	2,976.1	4.0	59,414.5
	Total	52,698.0	58,813.4	35.0	4,189.1	107,357.4
2021/22	Central	4,867.0	2,058.7	9,987.4	10,664.3	6,248.8
	Dar es Salaam	7,644.5	0.0	29,701.7	15,290.0	22,056.2
	Lake	6,784.8	295.6	0.0	6,989.3	91.1
	Northern	7,582.7	0.0	0.0	7,170.9	411.8
	South Eastern	21,063.9	40,249.8	-19,918.9	81.2	41,313.6
	Southern Highlands	59,414.5	68,167.9	-19,743.5	36,384.5	71,454.4
	Total	107,357.4	110,772.0	26.7	76,580.1	141,575.9

Source: National Food Reserve Agency

Note: The NFRA stock does not include the amount on transit; *, positive number means net transfer in, and negative number means net transfer out; and p, denotes provisional data

3.0 SECTORAL PERFORMANCE

3.1 Agriculture

3.1.1 Cash Crops Procurement

The volume of selected cash crops procured during 2021/22 crop season increased, save for tea (**Table 3.1**). The increase was associated with favorable weather conditions for the crops, timely availability of pesticides, and an improved marketing system including introduction of an open online coffee auction platform in Kagera region in May 2022.



Consolidated Zonal Economic Performance Report

Table 3.1: Cash Crops Procurement

							Tonnes
Year	Crops	Central	Lake	Northern	South Eastern	Southern Highlands	Total
2019/20	Sisal	4,698.1	5,183.2	25,373.1	1,124.7	N/A	36,379.0
	Coffee	N/A	28,824.0	6,288.3	10,984.4	13,429.4	59,526.1
	Cotton	37,822.0	302,479.0	N/A	0.0	8,676.0	348,977.0
	Tobacco	16,495.1	10,022.8	N/A	785.7	10,242.8	37,546.4
	Tea	N/A	356.8	4,738.8	N/A	23,619.0	28,714.7
	Cashewnuts	205.0	0.0	258.6	227,837.9	100.0	228,401.5
2020/21	Sisal	3,502.3	4,579.8	29,298.0	1,963.3	N/A	39,343.3
	Coffee	N/A	44,991.9	3,495.2	12,487.7	12,052.2	73,027.0
	Cotton	14,844.4	105,794.9	256.8	3.8	1,784.1	122,680.1
	Tobacco	27,346.4	9,956.1	N/A	531.8	16,637.3	54,471.7
	Tea	N/A	316.0	6,092.9	N/A	21,091.1	27,500.0
	Cashewnuts	122.1	0.0	144.6	208,332.1	87.3	208,686.1
2021/22 ^p	Sisal	4,389.2	6,782.4	31,682.9	739.9	N/A	43,594.3
	Coffee	N/A	29,515.8	5,163.2	15,271.0	15,875.6	65,825.7
	Cotton	19,789.7	122,559.8	266.0	24.5	2,152.6	144,792.5
	Tobacco	30,268.5	14,484.8	N/A	550.8	15,565.0	60,869.2
	Tea	N/A	295.9	5,103.2	N/A	19,425.5	24,824.6
	Cashewnuts	267.3	2.4	735.8	238,972.4	150.1	240,127.9

Source: Respective Crop Boards

Note: N/A denotes not applicable; and p, provisional data

3.1.2 Livestock Trade

Livestock³ worth TZS 2,054.2 billion were traded in registered markets in the review period, up from TZS 1,913.5 billion recorded in 2020/21. All zones recorded growth, except Central zone (**Table 3.2**). The increase was largely driven by a rise in cattle price associated with demand-supply mismatch. Traded cattle contributed 89.6 percent of the total value. In terms of share by zones, Lake zone accounted for 30 percent of the total value, followed by Northern and Central zones at 21.6 percent and 19.7 percent, respectively.

³ Comprising cattle, goats and sheep.



Consolidated Zonal Economic Performance Report

Table 3.2: Livestock Sold in Registered Markets

Year	Livestock	Unit	Central	Dar es Salaam	Lake	Northern	South Eastern	Southern Highlands	Total
2019/20	Cattle	Number	783,833	361,563	686,054	351,162	81,121	187,772	2,451,505
		Value (Millions of TZS)	383,674	267,084	316,661	212,773	47,055	92,350	1,319,597
	Goats	Number	485,039	204,723	390,040	262,143	70,221	47,879	1,460,045
		Value (Millions of TZS)	30,989	17,754	20,689	27,619	5,093	3,370	105,514
	Sheep	Number	160,651	30,395	144,773	184,468	10,370	8,853	539,510
		Value (Millions of TZS)	7,944	2,463	6,700	14,611	684	632	33,034
Total	Value (Millions of TZS)	422,608	287,300	344,050	255,003	52,832	96,352	1,458,145	
2020/21 ^r	Cattle	Number	836,280	269,035	1,015,883	568,319	136,997	198,648	3,025,161
		Value (Millions of TZS)	479,033	263,106	485,767	305,496	81,296	97,954	1,712,652
	Goats	Number	483,268	170,555	523,706	556,450	68,979	44,102	1,847,060
		Value (Millions of TZS)	31,717	19,965	33,231	66,033	4,664	2,879	158,489
	Sheep	Number	150,034	32,674	216,129	212,334	8,436	12,587	632,195
		Value (Millions of TZS)	7,235	3,147	10,745	19,692	622	889	42,330
Total	Value (Millions of TZS)	517,985	286,218	529,742	391,221	86,582	101,723	1,913,471	
2021/22 ^p	Cattle	Number	634,504	241,181	930,835	580,746	169,558	221,827	2,778,650
		Value (Millions of TZS)	405,598	318,833	568,275	312,833	111,805	122,448	1,839,792
	Goats	Number	396,054	179,677	467,356	599,536	84,176	54,456	1,781,255
		Value (Millions of TZS)	29,605	21,729	35,772	67,291	6,045	4,576	165,017
	Sheep	Number	136,252	36,000	218,693	343,075	7,135	14,421	755,576
		Value (Millions of TZS)	8,361	3,355	11,863	24,162	601	1,081	49,423
Total	Value (Millions of TZS)	443,564	343,917	615,910	404,286	118,451	128,104	2,054,232	

Source: Regional Administrative Secretary Offices, Ministry of Livestock and Fisheries, and Bank of Tanzania computations

Note: p denotes provisional data; and r, revised data

3.1.3 Hides and Skins

Cattle hides and skins from goats and sheep worth TZS 5,065.8 million were traded in 2021/22, about 33 percent higher than in the preceding year. This outcome emanated from growth of hides trading whose value recorded an annual increase of 43.2 percent. Over the recent, there has been an increasing demand of raw hides in West Africa, especially Nigeria and Ghana. Lake zone accounted for the largest share of the total value at 42.8 percent, followed by Dar es Salaam zone with 34.5 percent (**Table 3.3**).



Consolidated Zonal Economic Performance Report

Table 3.3 Hides and Skins

Year	Livestock	Unit of measure	Dar es Salaam	Lake	Northern	South Eastern	Total	
2019/20	Cattle	Pieces	377,612.0	384,445.8	388,257.0	29,864.0	1,150,314.8	
		Millions of TZS	768.4	782.3	1,136.7	41.7	2,687.3	
	Goats	Pieces	82,287.0	175,607.0	168,226.0	14,836.0	426,120.0	
		Millions of TZS	81.4	173.8	141.9	7.8	397.1	
	Sheep	Pieces	30,385.0	86,347.0	114,105.0	2,789.0	230,837.0	
		Millions of TZS	22.8	64.9	111.1	1.4	198.9	
	Total	Millions of TZS	872.7	1,021.0	1,389.7	50.9	3,283.3	
		Percentage share in total	26.6	31.1	42.3	1.6	100.0	
	2020/21	Cattle	Pieces	358,200.0	418,124.0	382,675.2	35,008.0	1,158,999.2
			Millions of TZS	967.8	1,129.7	1,070.3	50.7	3,167.7
Goats		Pieces	99,881.0	166,403.0	262,661.9	18,664.0	528,945.9	
		Millions of TZS	95.3	158.8	186.7	12.6	440.7	
Sheep		Pieces	29,943.0	65,525.0	111,425.9	2,789.0	206,893.9	
		Millions of TZS	15.6	34.1	153.0	1.4	202.7	
Total		Millions of TZS	1,078.6	1,322.5	1,410.0	64.7	3,811.1	
		Percentage share in total	28.3	34.7	37.0	1.7	100.0	
2021/22 ^p		Cattle	Pieces	351,812.0	418,354.0	664,008.6	41,360.0	1,434,174.6
			Millions of TZS	1,657.4	1,970.9	908.5	96.6	4,536.8
	Goats	Pieces	86,437.0	183,305.0	139,294.3	25,694.0	409,036.3	
		Millions of TZS	82.6	175.1	116.2	17.1	373.9	
	Sheep	Pieces	24,064.0	53,909.0	102,934.7	3,485.0	180,907.7	
		Millions of TZS	9.9	22.2	122.9	1.7	155.1	
	Total	Millions of TZS	1,749.9	2,168.3	1,147.6	115.5	5,065.8	
		Percentage share in total	34.5	42.8	22.7	2.3	100.0	

Source: Regional Administrative Secretary Offices, Ministry of Livestock and Fisheries, and Bank of Tanzania computations

Note: p denotes provisional data

3.1.3 Fish Trade

Value of fish sold in registered markets rose by 22.2 percent to TZS 521.6 billion in 2021/22, from the value recorded in the preceding year. All zones recorded improvement except Central zone. The increase was due to a rise in demand associated with recovery of hospitality industry, which was negatively affected by COVID-19 pandemic. Lake zone accounted for 56 percent of the total value, followed by Southern Highlands zone at 14.5 percent (**Table 3.4**).



Consolidated Zonal Economic Performance Report

Table 3.4: Fish Sold in Registered Markets

Zone	Unit	2018/19	2019/20	2020/21 ^r	2021/22 ^p	Percentage change, 2020/21 to 2021/22	Percentage share, 2021/22
Central	Tonnes	1,042.2	1,414.8	654.4	431.5	-34.1	0.5
	Value (Billions of TZS)	4.0	4.2	3.1	2.5	-17.6	0.5
Dar es Salaam	Tonnes	11,642.6	12,302.8	12,581.6	15,821.4	25.7	18.6
	Value (Billions of TZS)	38.7	37.8	40.4	45.6	13.1	8.7
Lake	Tonnes	39,414.0	34,863.9	25,448.1	28,448.9	11.8	33.5
	Value (Billions of TZS)	223.7	180.8	223.6	292.1	30.6	56.0
Northern	Tonnes	11,097.5	11,953.0	6,399.8	9,178.2	43.4	10.8
	Value (Billions of TZS)	50.9	51.9	26.1	31.3	20.1	6.0
South Eastern	Tonnes	10,896.8	9,202.1	19,219.6	16,330.5	-15.0	19.2
	Value (Billions of TZS)	47.8	46.5	66.4	74.2	11.8	14.2
Southern Highlands	Tonnes	19,494.4	17,073.0	12,345.2	14,837.2	20.2	17.4
	Value (Billions of TZS)	97.3	72.0	67.5	75.8	12.3	14.5
Total	Tonnes	93,587.4	86,809.7	76,648.7	85,047.7	11.0	100.0
	Value (Billions of TZS)	462.4	393.2	427.0	521.6	22.2	100.0

Source: Regional Administrative Secretary Offices; and Bank of Tanzania computations

Note: p denotes provisional data; and r, revised data

3.1.4 Forest Products Trade

As for forest products, the value amounted to TZS 875.1 billion, with timber and poles accounting for 65.6 percent and 22.6 percent of the total value, respectively (**Table 3.5**). Southern Highlands zone dominated with the share of 94.1 percent of the total value.

Table 3.5: Value of Forest Products in 2021/22

Product	Millions of TZS						Percentage share
	Central	Lake	Northern	South Eastern	Southern Highlands	Total	
Logs	1,766.1	798.7	n.a	6,429.7	n.a	8,994.5	1.0
Timber	702.0	135.6	21,318.4	239.6	551,803.6	574,199.2	65.6
Charcoal	3,223.8	2,433.9	n.a	9,955.8	n.a	15,613.4	1.8
Fire wood	92.4	86.7	n.a	582.0	n.a	761.2	0.1
Poles	131.7	52.6	36.5	238.2	197,329.5	197,788.4	22.6
Wood for furniture	490.6	n.a	n.a	852.5	n.a	1,343.1	0.2
Honey and wax	1,346.4	34.1	n.a	n.a	n.a	1,380.5	0.2
Others	54.0	n.a	533.0	368.2	74,044.7	74,999.9	8.6
Total	7,807.0	3,541.6	21,887.9	18,666.0	823,177.8	875,080.3	100.0
Percentage share in total	0.9	0.4	2.5	2.1	94.1	100.0	

Source: Tanzania Forest Service Agency

Note: p denotes provisional data; and n.a, not available



3.2 Manufacturing

Manufacturing activity continued to grow, triggered by increased capacity utilization, expansion of installed capacity of existing industries and improved demand, owing to gradual recovery of economic activities, particularly in the East African Community and Southern African Development Community countries from the effect of COVID-19 pandemic. The value of manufactured goods grew by 17 percent to TZS 12,628.3 billion from the amount recorded in the preceding year. Growth in value was in all zones except Northern, with Central zone recording the highest growth of 45.2 percent (**Chart 3.1**). Much of the increase was observed in the production of beverages, cement, rolled steel, sugar, vegetable oil, textile, ceramics and mattresses, which together represented about 60.3 percent of the total value. In terms of contribution, Dar es Salaam zone accounted for 52.4 percent of the total value of selected manufactured goods, followed by South Eastern and Northern zones (**Table 3.6a** and **Table 3.6b**).

Table 3.6a: Value of Selected Manufactured Commodities by Zone

Zone						Billions of TZS	
	2018/19	2019/20	2020/21 ^r	2021/22 ^p	Percentage change, 2020/21 to 2021/22	Percentage share, 2021/22	
Central	451.5	485.7	677.0	983.1	45.2	7.8	
Dar es Salaam	7,248.2	5,352.8	5,749.8	6,621.2	15.2	52.4	
Lake	655.3	613.7	600.2	750.7	25.1	5.9	
Northern	1,294.5	1,319.5	1,599.9	1,594.7	-0.3	12.6	
South Eastern	983.6	1,173.7	1,478.5	1,976.1	33.7	15.6	
Southern Highlands	591.1	593.4	691.4	702.4	1.6	5.6	
Total	11,224.1	9,538.7	10,796.7	12,628.3	17.0	100.0	

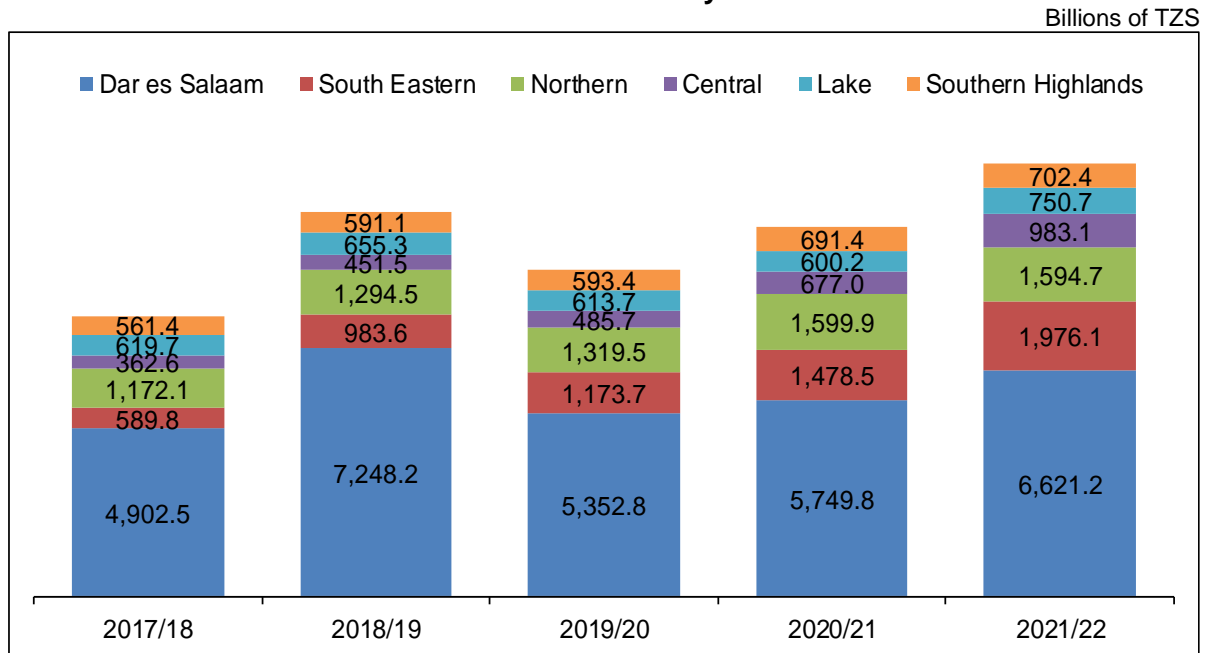
Source: National Bureau of Statistics, respective industries and Bank of Tanzania computations

Note: r denotes revised data; and p, provisional data



Consolidated Zonal Economic Performance Report

Charts 3.1: Value of Manufactured Commodities by Zone



Source: National Bureau of Statistics and manufacturing firms

Table 3.6b: Value of Selected Manufactured Commodities by Type

Billions of TZS

	2018/19	2019/20	2020/21 ^r	2021/22 ^p	Percentage change, 2020/21 to 2021/22	Contribution to growth, 2021/22
Total value	11,224.1	9,538.6	10,796.6	12,628.1	17.0	
o/w: Beverages	2,727.2	1,964.4	2,210.3	2,592.6	17.3	20.9
Cement	1,423.5	1,142.8	1,218.9	1,242.8	2.0	1.3
Rolled steel	506.5	519.6	690.1	1,086.9	57.5	21.7
Sugar	506.2	622.6	770.2	797.3	3.5	1.5
Vegetable oils and fats	724.5	645.6	588.8	653.1	10.9	3.5
Soap and toilet detergents	283.4	397.7	525.4	483.1	-8.0	-2.3
Textiles	232.1	258.5	251.3	389.3	54.9	7.5
Ceramics	166.5	176.9	258.8	339.1	31.0	4.4
Mattresses	200.4	171.2	210.6	269.3	27.8	3.2
Plastic articles	198.5	179.5	230.1	240.7	4.6	0.6

Source: National Bureau of Statistics and respective industries

Note: o/w denotes of which; r, revised data; and p, provisional data

3.3 Mining

Value of minerals recovery increased by 1.7 percent to USD 2,700.2 million in 2021/22, from the amount registered in the preceding year, mainly driven by coal and diamond. All zones with mining activities recorded improvement except Lake zone. The increase in the value of coal was due to a rise in demand from domestic manufacturing firms and export markets especially in



Consolidated Zonal Economic Performance Report

Netherlands, India, Kenya, Uganda and Rwanda. As for diamond, the surge was a result of both volume and unit price increase. Volume of diamond recovery increased significantly following resumption of production at Williamson Mines in January 2022. Gold, whose value continued to account for the largest share in total value of extracted minerals, recorded an annual decline of 8 percent in value owing to volume decrease (**Table 3.7a**). Despite the observed decline in the value of mineral recovery in Lake zone, the zone continued to account for the largest share of the total value at 77 percent, followed by Southern Highlands zone with 11.8 percent (**Table 3.7b**).

Table 3.7a: Value of Selected Mineral Recovery by Type

	Millions of USD					
	2018/19	2019/20	2020/21 ^r	2021/22 ^p	Percentage change, 2020/21 to 2021/22	Percentage share, 2021/22
Gold	1,503.6	2,055.4	2,391.7	2,201.2	-8.0	81.5
Coal	41.6	67.1	99.1	213.7	---	7.9
Building materials	0.0	71.0	86.7	93.3	7.5	3.5
Diamond	80.4	27.4	3.1	76.0	---	2.8
Gypsum	12.5	4.5	16.0	28.2	76.1	1.0
Industrial minerals	4.9	4.5	5.8	26.9	---	1.0
Gemstones	2.7	6.8	4.0	22.1	---	0.8
Limestone	9.7	10.8	19.6	16.2	-17.3	0.6
Salt	3.8	2.5	3.7	6.7	81.0	0.2
Tanzanite	11.1	18.4	16.4	6.6	-59.5	0.2
Others	0.4	21.5	8.0	9.3	16.6	0.3
Total	1,670.6	2,290.1	2,654.2	2,700.2	1.7	100.0

Source: Mining Commission, Regional Resident Mines Offices, Mining Companies and Bank of Tanzania computations

Note: r denotes revised data; p, provisional data; and "---", change that exceeds 100 percent

Table 3.7b: Value of Mineral Recovery by Zone

	Millions of USD					
	2018/19	2019/20	2020/21 ^r	2021/22 ^p	Percentage change, 2020/21 to 2021/22	Percentage share, 2021/22
Central	7.4	72.0	98.1	114.2	16.4	3.1
Lake	1,472.0	1,763.4	1,980.1	1,826.6	-7.8	77.0
Northern	27.0	23.8	29.9	71.1	---	1.0
South Eastern	57.1	160.8	200.3	317.2	58.3	7.0
Southern Highlands	107.1	270.1	345.7	371.2	7.4	11.8
Total	1,670.6	2,290.0	2,654.2	2,700.2	1.7	100.0

Source: Mining Commission, Regional Resident Mines Offices, Mining Companies and Bank of Tanzania computations

Note: r denotes revised data; p, provisional data; and "---", change that exceeds 100 percent



Consolidated Zonal Economic Performance Report

Trading activities at mineral trading centers improved across all zones, except Dar es Salaam and Northern zones. Minerals worth TZS 2,312.4 billion were traded at centers compared with TZS 2,094 billion registered in 2020/21, with gold accounting for 96.1 percent of the total value (**Table 3.8**). The rise in value was largely driven by increase in volume of minerals sold attributed to continued enforcement of the laws guiding the mining sector and increased public awareness on the advantages of using mineral trading centers. Lake zone accounted for 65.5 percent of the value of minerals traded at mineral market centers, followed by Southern Highlands zone at 23.8 percent.

Table 3.8: Value of Minerals Sold at Market Centers

		Millions of TZS						
Year	Type of mineral	Central	Dar es Salaam	Lake	Northern	South Eastern	Southern Highlands	Total
2019/20	Gold	106.6	14.5	1,005.8	13.9	14.9	301.1	1,456.8
	Tanzanite	0.0	0.0	0.0	26.1	0.0	0.0	26.1
	Diamond	0.0	0.0	6.7	0.0	0.0	0.0	6.7
	Tin	0.0	0.0	0.3	0.0	0.0	0.0	0.3
	Gemstone	0.3	0.0	0.0	11.3	1.4	0.0	13.0
	Total	106.9	14.5	1,012.9	51.3	16.3	301.1	1,503.0
2020/21	Gold	143.8	8.1	1,340.1	10.4	25.4	495.1	2,022.8
	Tanzanite	0.0	0.0	0.0	45.3	0.0	0.0	45.3
	Diamond	0.0	0.0	3.6	0.0	0.0	0.0	3.6
	Tin	0.0	0.0	4.1	0.0	0.0	0.0	4.1
	Gemstone	3.8	0.2	0.0	10.7	3.6	0.0	18.3
	Total	147.5	8.3	1,347.8	66.3	29.0	495.1	2,094.0
2021/22 ^P	Gold	148.8	3.5	1,475.9	14.2	28.6	551.2	2,222.2
	Tanzanite	0.0	0.0	0.0	26.6	0.0	0.0	26.6
	Diamond	0.0	0.0	10.3	0.0	0.0	0.0	10.3
	Tin	0.0	0.0	28.2	0.0	0.0	0.0	28.2
	Gemstone	6.9	0.1	0.0	11.5	6.6	0.0	25.1
	Total	155.7	3.6	1,514.4	52.3	35.2	551.2	2,312.4
Percentage share		6.7	0.2	65.5	2.3	1.5	23.8	100.0

Source: Mining Commission

Note: p denotes, provisional data

3.4 Tourism

Tourism activities continued to improve as reflected by increase in the number of visitors and earnings from the national parks and museums. The number of visitors and earnings from national parks increased to 1,869,980 and TZS 323.2 billion, respectively (**Table 3.9**)⁴. This outturn was

⁴ Earnings comprise entry, camping, concessions and other fees.



Consolidated Zonal Economic Performance Report

largely explained by relaxation of international travel restrictions and recovery of the global economy from the effects of COVID-19 pandemic, as well as continued government efforts to promote tourism activities. Northern zone continued to dominate in terms of number of visitors and earnings at 71 percent and 69.6 percent, respectively.

Table 3.9: Earnings and Number of Visitors to National Parks

Zone	Unit	2018/19	2019/20	2020/21 ^r	2021/22 ^p	Percentage change, 2020/21 to 2021/22	Percent share, 2021/22
Central	Number of visitors	67,844	60,417	51,241	74,977	46.3	4.0
	Earnings (Millions of TZS)	1,959	2,825	1,958	2,908	48.5	0.9
Lake	Number of visitors	454,287	334,815	215,495	385,333	78.8	20.6
	Earnings (Millions of TZS)	71,701	48,659	25,293	84,755	---	26.2
Northern	Number of visitors	469,579	389,577	477,894	1,327,735	---	71.0
	Earnings (Millions of TZS)	2,365	2,027	75,144	224,994	---	69.6
South Eastern	Number of visitors	19,922	14,459	40,626	59,511	46.5	3.2
	Earnings (Millions of TZS)	256	721	3,749	6,675	78.0	2.1
Southern Highlands	Number of visitors	34,553	31,782	30,485	22,424	-26.4	1.2
	Earnings (Millions of TZS)	2,564	2,030	1,933	3,870	100.2	1.2
Total	Number of visitors	1,046,185	831,050	815,740	1,869,980	---	100.0
	Earnings (Millions of TZS)	78,845	56,262	108,078	323,202	---	100.0

Source: Tanzania National Park Authority, Ngorongoro Conservation Area Authority and Bank of Tanzania computations

Note: r denotes revised data; p, provisional data; and "---", change that exceeds 100 percent

Regarding the performance of museums, the number of visitors increased by 67.8 percent to 70,644, while earnings rose by 46.7 percent to TZS 507.1 million (**Table 3.10**). Dar es Salaam zone continued to account for the largest share of both number of visitors and earnings at 77.2 percent and 81.1 percent, respectively.

Table 3.10: Earnings and Number of Visitors to Museums

Zone		2018/19	2019/20	2020/21	2021/22 ^p	Percentage change, 2020/21 to 2021/22	Percent share, 2021/22
Dar es Salaam	Number of visitors	31,878	30,277	31,986	54,504	70.4	77.2
	Earnings (Millions of TZS)	405.7	252.0	338.3	411.1	21.5	81.1
Lake	Number of visitors	n.a	n.a	n.a	6,061.00	N/A	8.6
	Earnings (Millions of TZS)	n.a	n.a	n.a	33.96	N/A	6.7
Northern	Number of visitors	n.a	n.a	n.a	9,328.00	N/A	13.2
	Earnings (Millions of TZS)	n.a	n.a	n.a	43.10	N/A	8.5
South Eastern	Number of visitors	11,179	3,370	10,104	751	-92.6	1.1
	Earnings (Millions of TZS)	7.6	6.0	7.4	18.9	---	3.7
Total	Number of visitors	43,057	33,647	42,090	70,644	67.8	100.0
	Earnings (Millions of TZS)	413.3	258.0	345.6	507.1	46.7	100.0

Source: National Museum of Tanzania and Bank of Tanzania computations

Note: p denotes provisional data; n.a, not available; "---", change that exceeds 100 percent; and N/A, not applicable



Consolidated Zonal Economic Performance Report

3.5 Energy

Electricity generated domestically went up by 11.8 percent to 8,982.9 Gigawatt hours (GWh) from the amount generated in the preceding year. Improvement was observed in Dar es Salaam and South Eastern zones, mainly due to high capacity utilization of gas-fired power plants partly to compensate for low performance of some hydro-power plants following a fall in water levels. The increase was notable at Kinyerezi II, Ubungo II, Songas and Tegeta in Dar es Salaam zone, and Mtwara and Somanga in South Eastern zone. Relatedly, electricity imported from Uganda and Zambia declined by 9.2 percent to 114 GWh from the volume reported in the preceding year (Table 3.11).

Table 3.11: Electricity and Natural Gas Production

	2018/19	2019/20	2020/21	2021/22 ^p	Percentage change, 2020/21 to 2021/22	Percentage share, 2021/22
Electricity (MWh):						
Central	1,523,523.9	1,902,600.3	1,927,166.3	1,900,904.0	-1.4	20.9
Dar es Salaam	4,958,570.3	4,665,094.4	4,731,717.4	5,928,995.1	25.3	65.2
Lake	143,003.9	130,210.7	148,003.0	143,163.9	-3.3	1.6
o/w: Imported	90,801.0	76,124.5	88,794.0	73,983.0	-16.7	
Northern	457,778.2	498,548.0	533,173.5	303,606.4	-43.1	3.3
South Eastern	130,746.5	133,708.8	133,946.0	146,208.4	9.2	1.6
Southern Highlands	337,378.5	447,636.0	688,278.2	673,932.2	-2.1	7.4
o/w: Imported	30,314.3	33,509.3	36,709.5	40,029.8	9.0	
Total	7,551,001.3	7,777,798.2	8,162,284.4	9,096,810.0	11.4	100.0
o/w: Imported	121,115.3	109,633.8	125,503.5	114,012.8	-9.2	1.3
Domestic generated	7,429,886.0	7,668,164.4	8,036,780.9	8,982,797.2	11.8	98.7
Natural gas (MMSCF):						
South Eastern	58,766.9	59,568.4	60,863.8	70,293.2	15.5	

Source: Tanzania Petroleum Development Corporation, Tanzania Electric Supply Company and Bank of Tanzania computations

Note: MWh denotes Megawatts hour; MMSCF, million standard cubic feet; and p, provisional data.



Consolidated Zonal Economic Performance Report

Table 3.12: Electricity Generation by Source

Year	Source							MWh
		Central	Dar es Salaam	Lake	Northern	South Eastern	Southern Highlands	Total
2019/20	Generated by Tanesco plants	1,898,435.4	3,298,383.9	54,086.2	480,139.3	103,407.9	404,203.7	6,238,656.4
	Hydro	1,898,308.6	N/A	N/A	478,537.0	N/A	388,112.9	2,764,958.5
	Thermal	126.8	3,298,383.9	54,086.2	1,602.3	103,407.9	16,090.8	3,473,697.9
	Generated by private plants	4,164.9	1,366,710.5	0.0	18,408.7	30,301.0	9,923.0	1,429,508.1
	Hydro	4,164.9	N/A	N/A	2,098.8	30,301.0	8,266.2	44,830.9
	Thermal	N/A	1,366,710.5	N/A	16,309.9	N/A	1,656.8	1,384,677.1
	Imported	N/A	N/A	76,124.5	0.0	0.0	33,509.3	109,633.8
	Total	1,902,600.3	4,665,094.4	130,210.7	498,548.0	133,708.8	447,636.0	7,777,798.2
2020/21	Generated by Tanesco plants	1,923,379.4	3,466,325.6	59,209.0	516,451.7	102,006.7	633,081.4	6,700,453.9
	Hydro	1,922,039.5	N/A	N/A	514,693.1	N/A	613,749.3	3,050,482.0
	Thermal	1,339.9	3,466,325.6	59,209.0	1,758.6	102,006.7	19,332.1	3,649,971.9
	Generated by private plants	3,786.9	1,265,391.7	0.0	16,721.7	31,939.3	18,487.3	1,336,327.0
	Hydro	3,786.9	N/A	N/A	2,167.6	31,939.3	15,840.8	53,734.6
	Thermal	N/A	1,265,391.7	N/A	14,554.1	N/A	2,646.6	1,282,592.4
	Imported	N/A	N/A	88,794.0	0.0	0.0	36,709.5	125,503.5
	Total	1,927,166.3	4,731,717.4	148,003.0	533,173.5	133,946.0	688,278.2	8,162,284.4
2021/22 ^p	Generated by Tanesco plants	1,894,795.0	4,415,845.2	69,181.0	287,236.6	121,545.3	610,826.7	7,399,429.7
	Hydro	1,892,838.7	N/A	N/A	284,930.0	N/A	585,753.9	2,763,522.6
	Thermal	1,956.2	4,415,845.2	69,181.0	2,306.7	121,545.3	25,072.7	4,635,907.1
	Generated by private plants	6,109.0	1,513,149.9	0.0	16,369.8	24,663.2	23,075.7	1,583,367.5
	Hydro	6,109.0	N/A	N/A	2,600.5	24,663.2	17,740.3	51,113.0
	Thermal	N/A	1,513,149.9	N/A	13,769.3	N/A	5,335.4	1,532,254.5
	Imported	N/A	N/A	73,983.0	0.0	0.0	40,029.8	114,012.8
	Total	1,900,904.0	5,928,995.1	143,163.9	303,606.4	146,208.4	673,932.2	9,096,810.0

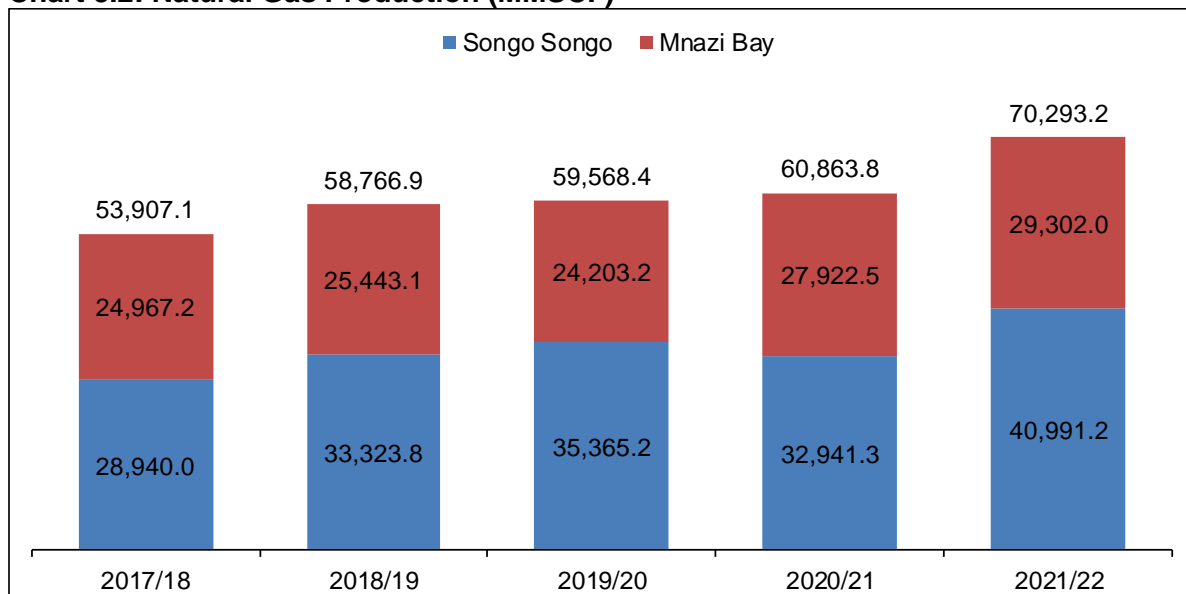
Source: Tanzania Electric Supply Company

Note: p denotes provisional data, N/A, denotes not applicable

Production of natural gas from Songo Songo and Mnazi Bay fields increased by 15.5 percent to 70,293.2 Million Standard Cubic Feet (MMSCF) from the volume recorded in the preceding year (**Table 3.11** and **Chart 3.2**). The outturn largely results from the rise in demand by Tanzania Electric Supply Company Limited (TANESCO) for its gas fired power plants.



Chart 3.2: Natural Gas Production (MMSCF)



Source: Tanzania Petroleum Development Corporation (TPDC)

Note: The bold italic numbers are total natural gas production

4.0 GOVERNMENT REVENUE PERFORMANCE

4.1 Tanzania Revenue Authority Collections

Central government tax revenue amounted to TZS 21,926.9 billion in 2021/22, equivalent to 99.5 percent of the target (**Table 4.1**). The performance was good in all tax categories reflecting improved tax administration measures and compliance following continuous public awareness, intensified use of electronic fiscal devices and improving economic activities. Taxes on local goods and services continued to dominate by contributing 41.5 percent of total tax collections (**Table 4.2**).

Table 4.1: TRA Revenue Performance by Zone

Zone	2018/19	2019/20	2020/21 ^r	2021/22 ^p		Actual to target ratio, 2021/22	Percentage share, 2021/22
				Target	Actual ^p		
Central	174.8	199.2	303.1	382.9	370.5	96.7	1.7
Dar es Salaam	13,889.0	16,027.7	15,925.7	19,624.2	19,364.1	98.7	88.3
Lake	439.5	434.8	483.6	525.8	527.8	100.4	2.4
Northern	831.6	768.0	693.7	991.5	1,181.8	119.2	5.4
South Eastern	121.7	202.4	167.9	211.1	177.9	84.3	0.8
Southern Highlands	205.8	209.4	273.3	295.2	304.9	103.3	1.4
Total	15,662.5	17,841.5	17,847.3	22,030.8	21,926.9	99.5	100.0

Source: Tanzania Revenue Authority and Bank of Tanzania computations

Note: Tax revenue is on gross basis; p denotes provisional data; and r, revised data



Consolidated Zonal Economic Performance Report

Table 4.2: TRA Revenue Performance by Category

		Billions of TZS							
Year ending	Category	Central	Dar es Salaam	Lake	Northern	South Eastern	Southern Highlands	Total	Percentage share
2019/20	Tax on imports	2.4	6,213.9	146.0	234.5	97.9	75.7	6,770.4	37.9
	Tax on local goods and services	41.3	7,236.3	116.6	201.9	32.9	109.7	7,738.7	43.4
	Direct tax	155.6	2,577.5	172.2	331.5	71.6	106.0	3,414.5	19.1
	Total	199.2	16,027.7	434.8	768.0	202.4	209.4	17,841.5	100.0
2020/21 ^r	Tax on imports	1.8	6,789.2	144.5	264.4	50.4	90.2	7,340.6	41.1
	Tax on local goods and services	42.5	6,834.7	140.0	149.8	46.1	144.9	7,358.1	41.2
	Direct tax	258.8	2,301.8	199.1	279.4	71.4	114.5	3,225.1	18.1
	Total	303.1	15,925.7	483.6	693.7	167.9	273.3	17,847.3	100.0
2021/22 ^p	Tax on imports	2.1	7,982.9	188.7	202.8	47.1	111.3	8,534.9	38.9
	Tax on local goods and services	88.9	8,562.2	148.4	114.4	45.9	131.7	9,091.5	41.5
	Direct tax	279.4	2,819.0	190.7	864.6	85.0	107.7	4,346.4	19.8
	Total	370.5	19,364.1	527.8	1,181.8	177.9	304.9	21,926.9	100.0

Source: Tanzania Revenue Authority and Bank of Tanzania computations

Note: Tax revenue is on gross basis; r denotes revised data; and p, provisional data

4.2 Local Government Revenue Collections

Revenue collection by Local Government Authorities (LGAs) was TZS 902.4 billion, above the target by 12.3 percent following enhanced use of electronic payment systems and improved economic activities. Northern zone accounted for 29.8 percent of total revenue collection, followed by Dar es Salaam zone at 22.7 percent (Table 4.3).

Table 4.3: Local Government Revenue Performance by Zone

Zone				2021/22 ^p		Billions of TZS	
	2018/19	2019/20	2020/21 ^r	Target	Actual ^p	Actual to target ratio, 2021/21	Percentage share, 2021/22
Central	137.0	128.5	113.4	137.5	136.7	99.4	15.2
Dar es salaam	102.8	99.4	166.6	191.3	205.0	107.1	22.7
Lake	142.7	135.2	150.0	176.8	177.9	100.6	19.7
Northern	68.5	79.2	120.0	186.0	269.1	144.6	29.8
South Eastern	68.1	87.4	95.9	111.6	113.7	102.0	12.6
Total	519.0	529.8	645.8	803.3	902.4	112.3	100.0

Source: Regional Administrative Secretary offices

Note: p denotes provisional data; and r, revised data



5.0 TRADE

5.1 Cross Border Trade

Trade with neighboring countries recorded a surplus of TZS 6,696.4 billion, higher than the preceding year by 22.6 percent. All zones registered trade surplus, with Lake and Southern Highlands zones recording the highest trade surplus (**Table 5.1**). The increase in Lake zone was driven by exports of goods such as unrefined gold, live cattle, rough diamond, cotton yarn, sunflower and fish fillets, while in Southern Highlands zone it was due to exports of maize and cement.

Table 5.1: Cross Border Trade

Zone		2018/19	2019/20	2020/21 ^r	2021/22 ^p	Billions of TZS Percentage change, 2020/21 to 2021/22
Lake	Exports	2,605.7	3,066.0	3,960.1	4,816.9	21.6
	Imports	512.7	524.9	564.4	766.6	35.8
	Trade balance	2,093.0	2,541.1	3,395.7	4,050.3	19.3
Northern	Exports	122.9	111.4	112.4	882.6	---
	Imports	543.4	442.3	493.6	1,975.7	---
	Trade balance	-420.5	-330.9	-381.2	-1,093.0	---
South Eastern	Exports	96.8	5.2	6.6	60.2	---
	Imports	72.6	2.2	1.5	6.3	---
	Trade balance	24.2	3.0	5.1	53.9	---
Southern Highlands	Exports	3,271.1	3,162.6	3,115.3	3,631.2	16.6
	Imports	2,974.4	2,571.1	2,332.7	2,132.0	-8.6
	Trade balance	296.7	591.5	782.6	1,499.2	91.6
Total	Exports	6,096.6	6,345.2	7,194.4	9,390.9	30.5
	Imports	4,103.2	3,540.6	3,392.2	4,880.6	43.9
	Trade balance	1,993.4	2,804.6	3,802.2	4,510.3	18.6

Source: Tanzania Revenue Authority

Note: r denotes revised data; p, provisional data; and "---", change that exceeds 100 percent

5.2 Ports Performance

Total volume of cargo handled through major sea and lake ports increased by 14.9 percent to 19.8 million tonnes from the amount recorded in the preceding year (**Table 5.2**). All ports registered positive growth except Mbamba Bay. The increase in the volume of cargo in Dar es Salaam and Tanga ports reflects the recovering of the global supply chain and infrastructure improvement at Dar es Salaam port. The increase in volume of cargo in Mtwara port resulted from increased exportation of coal to Netherlands, Senegal, Ghana, Egypt and India, and cashew nuts to Vietnam coupled with importation of petroleum products.



Consolidated Zonal Economic Performance Report

Table 5.2: Ports Performance

		"000" Tonnes					
Zone	Port	2018/19	2019/20	2020/21 ^r	2021/22 ^p	Percentage change, 2020/21 to 2021/22	Percentage share, 2021/22
Dar es Salaam	Dar es Salaam	15,742.7	16,071.5	16,190.9	17,851.5	10.3	90.4
Northern	Tanga	666.4	553.7	806.1	942.0	16.9	4.8
South Eastern	Mtwara	106.2	273.5	177.4	592.4	---	3.0
	Kilwa	7.6	9.0	12.1	35.7	---	0.2
	Lindi	2.1	4.6	7.8	8.6	9.9	0.0
	Mbambabay	n.a	n.a	3.2	3.0	-7.1	0.0
Lake	Kigoma	n.a	n.a	n.a	179.5	N/A	0.9
	Mwanza	n.a	n.a	n.a	139.5	N/A	0.7
Total		16,524.9	16,912.3	17,197.5	19,752.0	14.9	100.0

Source: Tanzania Port Authority

Note: r denotes revised data; p, provisional data; n.a, not available; N/A, not applicable; and "---", change that exceeds 100 percent

5.3 Airports Performance

Airport operations across zones continued to register improvement with the number of international and domestic aircraft movements rising to 25,264 and 172,549 from 15,504 and 52,206 recorded in the year ending June 2021, respectively. Likewise, the volume of cargo handled grew to 27,082.6 tonnes from 22,304.8 tonnes in the previous year (**Table 5.3**). These developments point to improving business environment both domestically and internationally.

Table 5.3: Airports Performance

Year	Item	Unit of measure	Central	Dar es Salaam	Lake	Northern	South Eastern	Southern Highlands	Total
2020/21	International flights movement	Number	68	13,180	363	1,831	5	57	15,504
	International passengers	Number	227	537,575	657	40,589	18	7	579,073
	Domestic flights movement	Number	4,022	25,988	7,728	10,630	1,929	1,909	52,206
	Domestic passengers	Number	104,945	626,530	248,414	157,948	20,671	57,300	1,215,808
	Volume of cargo	Tonnes	708.2	18,423.9	1,229.6	1,299.2	132.0	512.0	22,304.8
2021/22	International flights movement	Number	200	16,890	1,174	6,876	18	106	25,264
	International passengers	Number	665	852,325	2,849	220,096	53	1,914	1,077,902
	Domestic flights movement	Number	4,739	33,301	10,492	32,953	2,878	88,186	172,549
	Domestic passengers	Number	149,509	993,363	375,034	422,279	34,646	62,343	2,037,174
	Volume of cargo	Tonnes	1,001.2	20,875.5	1,526.0	3,252.7	266.7	160.5	27,082.6

Source: Tanzania Civil Aviation Authority

6.0 FINANCIAL SECTOR DEVELOPMENTS

6.1 Bank Deposits and Loans

Deposits mobilized by banks increased in all zones except Southern Highlands zone, rising by 13 percent to TZS 26,459.1 billion. The increase was partly explained by ongoing deposit



Consolidated Zonal Economic Performance Report

mobilisation measures adopted by banks including introduction of new products, use of agent banking and digital services. Dar es Salaam zone accounted for the largest share at 61.1 percent (**Table 6.1**).

Table 6.1: Bank Deposits

Zone				Billions of TZS	
	2019/20	2020/21 ^r	2021/22 ^P	Percentage change, 2020/21 to 2021/22	Percentage share, 2021/22
Dar es Salaam	13,417.8	14,583.2	16,172.0	10.9	61.1
Northern	2,226.3	2,228.6	3,075.2	38.0	11.6
Central	1,871.4	1,977.2	2,332.4	18.0	8.8
Southern Highlands	1,741.3	1,817.9	1,770.2	-2.6	6.7
Lake	1,652.6	2,033.4	2,283.8	12.3	8.6
South Eastern	685.3	780.6	825.6	5.8	3.1
Total*	21,594.7	23,420.8	26,459.1	13.0	100.0

Source: Banks and Bank of Tanzania computations

Note: * data excludes Zanzibar; p, denotes provisional data; and r, revised data

Gross loans to various economic activities by commercial banks⁵ increased to TZS 21,158.9 billion from TZS 18,125 billion at the end of June 2021 with all zones recording growth (**Table 6.2**). Personal and trade credits represented 51.1 percent of outstanding loans (**Table 6.3**).

Table 6.2: Bank Loans

Zone				Billions of TZS	
	2019/20	2020/21 ^r	2021/22 ^P	Percentage change, 2020/21 to 2021/22	Percentage share, 2021/22
Central	1,197.1	1,576.0	2,120.1	34.5	10.0
Dar es Salaam	9,679.5	10,557.8	12,173.0	15.3	57.5
South Eastern	591.1	776.0	1,014.5	30.7	4.8
Lake	1,962.9	2,119.2	2,728.2	28.7	12.9
Northern	1,430.2	2,210.8	2,212.0	0.1	10.5
Southern Highlands	862.0	885.3	911.2	2.9	4.3
Total*	15,722.8	18,125.0	21,158.9	16.7	100.0

Source: Banks and Bank of Tanzania computations

Note: p denotes provisional data; r, revised data; and *, excludes data from Zanzibar

⁵ Bank loans include loans and advances provided by banks in Tanzania Mainland only, and do not include accrued interest on loans and advances as well as other sources of financing to the private sector such as securities, shares and other equity as well as prepaid insurance premiums.



Consolidated Zonal Economic Performance Report

Table 6.3: Percentage Share of Banks' Lending by Activity as at the end of June 2022

Activity	Central	Dar es Salaam	Lake	Northern	South Eastern	Southern Highlands	Average	Average
Agriculture, hunting, forestry and fishing	11.0	3.2	12.5	8.6	10.8	17.2	10.5	10.5
Building and construction	0.6	5.9	2.6	2.3	0.8	0.6	2.1	2.1
Electricity, gas and water	0.1	3.9	0.8	0.4	0.6	0.4	1.0	1.0
Financial intermediation	0.1	2.3	1.3	0.1	0.0	1.7	0.9	0.9
Manufacturing	2.1	13.5	5.4	8.9	0.6	0.9	5.2	5.2
Mining and quarrying	0.0	2.3	1.8	0.6	0.1	2.1	1.1	1.1
Transport, storage and communication	1.3	7.3	3.0	1.6	1.5	1.8	2.7	2.7
Wholesale and retail trade	5.7	21.9	45.9	13.7	5.8	8.6	16.9	16.9
Real estate	1.6	6.4	1.6	1.0	0.2	0.2	1.8	1.8
Personal	74.0	16.0	22.8	53.2	72.0	31.9	45.0	45.0
Hotels and restaurants	0.9	2.8	0.2	5.1	0.4	0.7	1.7	1.7
Services (Health and Education)	1.0	9.9	1.5	2.9	1.5	34.0	8.5	8.5
Others	1.6	4.8	0.5	1.7	5.7	0.1	2.4	2.4

Source: Banks and Bank of Tanzania computations

6.2 Agent Banking Transactions

Agent banking services improved as reflected by an increase in the number of bank agents, as well as volume and value of transactions. The volume and value of cash deposits increased to 47,429,736 and TZS 23,683.13 billion, respectively. Improvement was also observed in volume and value of cash withdrawals that grew by 47.5 percent and 67.7 percent, respectively (**Table 6.4**). This performance was attributed to increasing public awareness and integration of banking systems and mobile networks.



Consolidated Zonal Economic Performance Report

Table 6.4: Agent Banking Transactions

Zone	Year	Number of agents	Cash deposit		Cash withdrawal	
			Number of transactions	Value (Millions of TZS)	Number of transactions	Value (Millions of TZS)
Central	2019/20	4,792	4,220,325	2,313.5	5,752,459	1,101.9
	2020/21	6,106	5,533,664	3,635.6	3,957,567	1,357.6
	2021/22	7,074	9,293,035	5,998.6	5,878,586	2,276.3
Dar es Salaam	2019/20	11,308	590,409.0	438.8	449,521	172.8
	2020/21	14,216	863,777	812.9	577,149	190.4
	2021/22	19,698	1,623,624	1,559.6	992,888	440.9
Lake	2019/20	17,293	6,798,146.0	5,277,715.6	3,003,094	1,521,245.1
	2020/21	30,418	12,180,205	9,644,893.8	5,371,381	2,754,919.1
	2021/22	59,752	23,576,554	18,455,162.5	10,391,857	5,296,125.4
Northern	2019/20	7,253	1,841,641	1,022,252.7	2,735,379	313,822.9
	2020/21	7,353	2,912,984	2,037,242.9	3,629,548	640,228.6
	2021/22	7,353	3,188,366	1,712,385.3	3,687,473	502,241.5
South Eastern	2019/20	2,372	2,871,342	1,785,897.1	2,605,416	856,599.1
	2020/21	3,318	3,524,753	2,178,917.9	3,033,522	1,009,849.8
	2021/22	3,859	5,516,709	3,505,453.7	4,250,776	1,590,175.4
Southern Highlands	2019/20	5,359	6,134,135	3,745.8	3,740,177	1,536.1
	2020/21	5,745	3,517,717	2,295.2	2,048,909	811.1
	2021/22	5,745	4,231,448	2,576.6	2,263,572	1,092.7
Total*	2019/20	48,377	22,455,998	8,092,363.5	18,286,046	6,433,118.8
	2020/21	67,156	28,533,101	13,867,798.3	18,618,076	4,407,356.6
	2021/22	103,481	47,429,736	23,683,136.2	27,465,152	7,392,352.3
Percentage change, 2020/21 to 2021/22		54.1	66.2	70.8	47.5	67.7

Source: Bank of Tanzania

Note: * data do not include Zanzibar



Consolidated Zonal Economic Performance Report

7.0 STATISTICAL ANNEXES

Annex 1: Regional Gross Domestic Product at Current Prices, Tanzania Mainland

Region	Millions of TZS					
	2016	2017	2018	2019	2020 ^r	2021 ^p
Dar -es Salaam	18,425,324	20,546,951	22,521,298	23,858,608	25,273,744	27,486,551
Mwanza	7,813,159	8,709,540	9,545,154	10,269,124	10,957,916	11,897,322
Mbeya	6,091,395	6,663,158	7,296,183	7,837,463	8,352,140	9,083,400
Shinyanga	5,653,566	6,084,991	6,600,149	7,164,597	7,589,553	8,264,046
Morogoro	5,202,454	5,700,918	6,176,007	6,705,640	7,163,146	7,740,305
Tanga	5,061,531	5,558,368	6,001,969	6,537,966	6,965,603	7,591,485
Arusha	5,094,048	5,570,252	5,985,038	6,551,945	6,943,552	7,495,467
Geita	4,894,472	5,310,503	5,751,274	6,201,522	6,668,974	7,272,867
Kilimanjaro	4,812,271	5,261,477	5,740,422	6,258,587	6,621,744	7,181,501
Ruvuma	4,226,976	4,513,232	4,891,412	5,308,638	5,623,511	6,105,870
Tabora	4,118,592	4,394,463	4,703,385	5,168,937	5,475,525	5,964,927
Mara	3,977,693	4,335,060	4,609,350	5,099,065	5,401,508	5,894,429
Manyara	3,620,023	3,990,619	4,366,862	4,693,920	4,972,333	5,447,678
Dodoma	3,164,808	3,479,914	3,863,134	4,302,876	4,657,713	5,076,173
Iringa	3,696,825	3,934,577	4,139,234	4,333,833	4,630,735	4,985,513
Kigoma	3,143,136	3,325,546	3,616,746	3,911,635	4,143,648	4,516,439
Mtwara	2,926,346	3,230,478	3,543,706	3,799,813	4,030,174	4,383,031
Kagera	2,855,913	3,026,215	3,241,177	3,572,624	3,784,529	4,125,878
Rukwa	2,518,427	2,543,247	2,753,744	3,004,180	3,182,368	3,470,996
Coast	1,950,914	2,315,568	2,504,505	2,723,661	2,984,829	3,246,162
Lindi	2,124,305	2,351,591	2,523,610	2,766,032	2,959,980	3,229,137
Singida	2,005,093	2,220,957	2,412,102	2,612,375	2,767,324	3,019,613
Songwe	1,972,374	2,173,229	2,351,544	2,556,236	2,707,855	2,944,937
Njombe	1,629,302	1,889,990	2,173,489	2,517,247	2,666,554	2,930,020
Katavi	1,383,376	1,613,656	1,732,408	1,885,329	1,997,154	2,172,012
Total	108,362,324	118,744,498	129,043,901	139,641,854	148,522,111	161,525,759

Source: National Bureau of Statistics

Note: p denotes provisional data; and r, revised data



Consolidated Zonal Economic Performance Report

Annex 2: Regional Gross Domestic Product (GDP) at Current Prices, Percentage Share in Total GDP, Tanzania Mainland

Region	2016	2017	2018	2019	2020 ^r	2021 ^p
Dar es Salaam	17.0	17.3	17.5	17.1	17.0	17.0
Mwanza	7.2	7.3	7.4	7.4	7.4	7.4
Mbeya	5.6	5.6	5.7	5.6	5.6	5.6
Shinyanga	5.2	5.1	5.1	5.1	5.1	5.1
Morogoro	4.8	4.8	4.8	4.8	4.8	4.8
Tanga	4.7	4.7	4.7	4.7	4.7	4.7
Arusha	4.7	4.7	4.6	4.7	4.7	4.6
Geita	4.5	4.5	4.5	4.4	4.5	4.5
Kilimanjaro	4.4	4.4	4.5	4.5	4.5	4.4
Ruvuma	3.9	3.8	3.8	3.8	3.8	3.8
Tabora	3.8	3.7	3.6	3.7	3.7	3.7
Mara	3.7	3.7	3.6	3.7	3.6	3.6
Manyara	3.3	3.4	3.4	3.4	3.4	3.4
Dodoma	2.9	2.9	3.0	3.1	3.1	3.1
Iringa	3.4	3.3	3.2	3.1	3.1	3.1
Kigoma	2.9	2.8	2.8	2.8	2.8	2.8
Mtwara	2.7	2.7	2.8	2.7	2.7	2.7
Kagera	2.6	2.6	2.5	2.6	2.6	2.6
Rukwa	2.3	2.1	2.1	2.2	2.1	2.1
Coast	1.8	2.0	1.9	2.0	2.0	2.0
Lindi	2.0	2.0	2.0	2.0	2.0	2.0
Singida	1.9	1.9	1.9	1.9	1.9	1.9
Songwe	1.8	1.8	1.8	1.8	1.8	1.8
Njombe	1.5	1.6	1.7	1.8	1.8	1.8
Katavi	1.3	1.4	1.3	1.4	1.3	1.3
Total	100.0	100.0	100.0	100	100	100

Source: National Bureau of Statistics

Note: p denotes provisional data; and r, revised data



Consolidated Zonal Economic Performance Report

Annex 3: Regional Per Capita Gross Domestic Product at Current Prices, Tanzania Mainland

TZS						
Region	2016	2017	2018	2019	2020 ^r	2021 ^p
Dar es Salaam	3,771,149.0	4,095,226.0	4,375,557.0	4,522,689.0	4,678,751.0	4,973,466.9
Iringa	3,546,649.0	3,681,665.0	3,779,528.0	3,862,146.0	4,028,544.0	4,311,608.3
Mbeya	3,135,211.0	3,321,495.0	3,524,025.0	3,668,170.0	3,788,604.0	3,994,044.4
Ruvuma	2,801,600.0	2,923,326.0	3,096,201.0	3,283,035.0	3,396,983.0	3,602,161.9
Kilimanjaro	2,698,623.0	2,885,925.0	3,079,082.0	3,281,940.0	3,393,587.0	3,596,231.3
Arusha	2,686,226.0	2,859,151.0	2,992,658.0	3,193,186.0	3,300,051.0	3,520,262.4
Njombe	2,117,767.0	2,403,507.0	2,705,703.0	3,068,485.0	3,183,728.0	3,427,196.6
Lindi	2,251,998.0	2,440,764.0	2,565,327.0	2,753,807.0	2,885,533.0	3,081,875.7
Tanga	2,266,384.0	2,432,853.0	2,568,178.0	2,733,502.0	2,843,991.0	2,986,909.3
Geita	2,375,946.0	2,471,830.0	2,567,592.0	2,655,746.0	2,739,023.0	2,907,625.7
Mtwara	2,133,512.0	2,311,244.0	2,488,413.0	2,618,614.0	2,725,164.0	2,864,332.6
Mwanza	2,233,942.0	2,391,919.0	2,518,768.0	2,604,064.0	2,670,009.0	2,811,777.5
Manyara	2,212,877.0	2,357,593.0	2,494,119.0	2,591,996.0	2,654,594.0	2,785,051.6
Morogoro	2,109,028.2	2,252,198.7	2,378,784.3	2,518,580.6	2,670,521.3	2,765,125.5
Rukwa	2,235,234.0	2,191,381.0	2,303,328.0	2,438,539.0	2,505,705.0	2,649,601.3
Katavi	2,047,174.0	2,284,104.0	2,346,683.0	2,444,393.0	2,478,206.0	2,578,974.2
Mara	1,948,605.0	2,041,293.0	2,086,488.0	2,218,608.0	2,258,302.0	2,391,683.0
Coast	1,615,487.0	1,872,708.0	1,979,057.0	2,102,779.0	2,251,254.0	2,367,093.4
Songwe	1,744,604.0	1,863,682.0	1,955,678.0	2,061,530.0	2,117,414.0	2,232,596.1
Shinyanga	1,650,147.0	1,705,949.0	1,777,927.0	1,854,663.0	1,887,800.0	1,974,839.5
Tabora	1,543,075.0	1,586,968.5	1,638,512.0	1,737,792.7	1,808,677.3	1,869,183.3
Dodoma	1,347,533.8	1,438,016.1	1,549,599.3	1,675,239.4	1,790,670.4	1,826,417.3
Singida	1,313,076.8	1,415,249.6	1,495,548.6	1,575,536.6	1,651,784.5	1,721,195.3
Kigoma	1,286,600.0	1,315,117.0	1,382,442.0	1,445,098.0	1,479,389.0	1,558,162.1
Kagera	1,012,460.0	1,036,396.0	1,072,514.0	1,142,177.0	1,168,661.0	1,230,415.0
Tanzania Mainland	2,191,190.2	2,327,395.4	2,452,405.6	2,573,324.4	2,701,038.2	2,798,224.2

Source: National Bureau of Statistics

Note: p denotes provisional data; and r, revised data



Consolidated Zonal Economic Performance Report

Annex 4: Zonal Consumer Price Index

Base: December 2015 = 100

Zone	Central			Dar es Salaam			Lake			Northern			South Eastern			Southern Highlands		
	Headline	Food	Non-food	Headline	Food	Non-food	Headline	Food	Non-food	Headline	Food	Non-food	Headline	Food	Non-food	Headline	Food	Non-food
Weights (%)	100.0	41.5	58.5	100.0	26.3	73.7	100.0	40.7	59.3	100.0	40.6	59.4	100.0	48.4	51.6	100.0	41.4	58.6
Jan-20	98.7	99.4	98.2	98.3	99.1	98.0	99.5	101.4	98.2	98.2	100.1	96.9	95.7	92.7	98.4	96.1	96.9	95.7
Feb-20	99.6	100.7	98.8	99.8	100.7	99.4	100.0	101.1	99.2	98.8	101.0	97.3	97.7	96.0	99.3	96.4	97.4	95.8
Mar-20	101.0	102.1	100.3	101.2	101.7	101.0	99.7	99.5	99.9	99.2	101.4	97.7	99.1	99.3	99.0	98.6	99.2	98.2
Apr-20	101.5	102.9	100.5	100.4	99.5	100.7	100.4	100.6	100.2	100.6	102.0	99.7	100.2	100.4	100.1	99.9	100.7	99.4
May-20	102.0	103.2	101.1	99.7	99.4	99.8	100.8	102.0	100.0	102.3	103.7	101.3	100.6	100.4	100.8	100.5	101.9	99.7
Jun-20	101.3	101.2	101.4	99.5	99.6	99.5	101.1	101.7	100.7	101.7	102.3	101.3	101.3	101.9	100.7	100.8	102.1	100.1
Jul-20	101.2	101.1	101.2	100.0	99.3	100.4	99.8	99.0	100.3	101.0	101.1	101.0	101.8	103.5	100.2	100.7	101.1	100.5
Aug-20	100.7	100.2	101.0	100.1	99.1	100.5	98.9	97.2	100.1	100.4	99.4	101.0	100.9	101.9	99.8	100.0	99.7	100.2
Sep-20	98.9	98.0	99.5	100.7	101.3	100.5	99.1	97.1	100.5	99.8	97.7	101.2	99.9	100.0	99.9	100.1	99.6	100.5
Oct-20	98.1	97.7	98.4	99.9	99.9	99.9	99.8	99.2	100.3	99.1	97.7	100.1	99.7	99.5	100.0	102.1	100.5	103.0
Nov-20	98.0	96.2	99.3	100.2	99.9	100.3	100.2	100.0	100.4	98.7	95.9	100.6	100.7	100.8	100.5	101.9	99.8	103.2
Dec-20	99.0	97.2	100.2	100.1	100.3	100.0	100.7	101.3	100.2	100.1	97.7	101.8	102.4	103.6	101.2	102.8	101.1	103.8

Base: 2020 = 100

Zone	Central			Dar es Salaam			Lake			Northern			South Eastern			Southern Highlands		
	Headline	Food	Non-food	Headline	Food	Non-food	Headline	Food	Non-food	Headline	Food	Non-food	Headline	Food	Non-food	Headline	Food	Non-food
New weights (%)	100.0	27.7	72.3	100.0	23.1	76.9	100.0	29.9	70.1	100.0	30.2	69.8	100.0	33.7	66.3	100.0	27.0	73.0
Jan-21	100.7	98.5	101.5	101.5	100.4	101.8	101.9	100.8	102.3	100.8	97.7	102.2	101.1	102.2	100.6	103.3	104.9	102.7
Feb-21	101.0	99.3	101.6	102.1	102.0	102.1	103.4	103.4	103.3	101.4	99.1	102.4	102.5	104.1	101.7	104.3	107.0	103.3
Mar-21	101.6	100.4	102.1	102.5	103.0	102.3	104.7	105.1	104.6	103.0	101.1	103.9	103.7	105.9	102.6	105.0	108.7	103.7
Apr-21	101.4	101.1	101.5	103.0	103.7	102.8	103.9	104.5	103.7	103.8	103.3	104.0	104.0	106.1	103.0	105.3	107.9	104.3
May-21	101.7	101.5	101.8	102.8	103.4	102.6	105.1	106.3	104.6	104.0	104.7	103.8	104.7	108.1	103.0	105.6	109.4	104.2
Jun-21	101.7	101.3	101.9	102.9	103.3	102.8	106.1	109.1	104.7	104.3	105.7	103.7	105.1	107.8	103.7	105.6	109.2	104.3
Jul-21	101.2	99.5	101.8	102.8	102.8	102.9	107.2	112.3	105.0	103.9	104.3	103.7	105.1	107.5	103.9	105.5	108.8	104.3
Aug-21	100.5	96.0	102.2	102.2	100.1	102.9	106.8	109.6	105.6	103.0	101.9	103.4	105.3	105.8	105.0	104.9	105.8	104.6
Sep-21	100.4	96.1	102.0	102.4	101.0	102.9	106.7	109.3	105.6	102.5	100.8	103.2	105.0	105.0	105.0	105.1	105.4	104.9
Oct-21	100.3	96.1	101.9	102.6	101.4	102.9	106.4	108.7	105.5	102.1	100.2	102.9	104.8	104.8	104.8	105.1	105.8	104.9
Nov-21	100.6	96.8	102.1	104.0	104.2	104.0	106.6	108.9	105.6	102.2	100.2	103.1	104.8	104.7	104.8	105.6	107.2	105.0
Dec-21	101.4	99.0	102.3	104.9	106.5	104.5	107.7	111.6	106.0	103.4	101.7	104.1	105.1	105.4	105.0	106.1	108.9	105.1
Jan-22	102.9	101.9	103.3	104.7	105.3	104.5	108.4	113.2	106.4	103.8	102.5	104.3	105.7	106.1	105.6	107.5	111.1	106.2
Feb-22	103.6	103.2	103.8	105.2	106.5	104.8	109.4	116.0	106.5	104.5	104.9	104.3	106.0	106.8	105.6	107.8	111.6	106.4
Mar-22	104.6	105.8	104.2	105.8	107.2	105.4	110.5	118.4	107.1	105.1	106.8	104.4	106.9	108.6	106.0	109.0	114.7	106.9
Apr-22	105.0	106.1	104.5	106.7	110.5	105.6	111.7	119.5	108.4	105.4	106.7	104.8	107.4	110.3	105.9	110.3	117.7	107.6
May-22	105.0	105.6	104.8	107.9	112.0	106.6	111.9	119.5	108.7	106.2	106.8	105.9	107.7	110.2	106.4	110.9	117.1	108.7
Jun-22	106.0	106.7	105.7	109.0	111.6	108.2	111.7	118.9	108.6	106.6	108.2	105.9	108.2	111.8	106.4	111.1	117.1	108.9

Source: National Bureau of Statistics



Consolidated Zonal Economic Performance Report

Annex 5: Zonal Consumer Price Index – Twelve-Month Percentage Change

Base 2020=100

Zone	Central			Dar es Salaam			Lake			Northern			South Eastern			Southern Highlands		
	Headline	Food	Non-food	Headline	Food	Non-food	Headline	Food	Non-food	Headline	Food	Non-food	Headline	Food	Non-food	Headline	Food	Non-food
Weights 2011	100.0	40.7	59.3	100.0	29.5	70.5	100.0	41.4	58.6	100.0	40.6	59.4	100.0	41.4	58.6	100.0	37.2	62.8
Jan-20	1.5	2.5	0.9	3.8	9.2	1.6	4.0	5.2	3.2	3.3	4.5	2.4	4.9	5.3	4.5	3.4	3.5	3.3
Feb-20	1.0	2.7	-0.1	4.5	9.6	2.5	2.8	2.1	3.3	2.6	3.2	2.3	6.0	7.6	4.5	1.9	4.0	0.7
Mar-20	1.1	2.0	0.5	5.1	8.5	3.7	0.9	-0.5	1.8	1.1	2.1	0.4	5.6	9.1	2.4	3.5	4.2	3.1
Apr-20	1.0	1.0	1.0	3.9	5.5	3.2	1.1	-0.6	2.2	2.0	1.5	2.4	5.8	9.4	2.6	4.4	4.9	4.2
May-20	1.8	1.1	2.3	2.4	3.4	2.0	0.9	0.9	0.9	3.7	2.4	4.7	6.0	9.5	2.9	5.1	6.0	4.6
Jun-20	2.1	0.7	3.0	2.2	3.4	1.7	1.6	0.8	2.2	2.5	-1.2	5.2	6.8	10.7	3.3	5.9	6.2	5.8
Jul-20	2.5	1.5	3.2	3.0	4.0	2.5	0.6	-1.1	1.8	2.0	-2.0	4.9	7.7	13.0	3.1	6.4	6.3	6.5
Aug-20	2.9	2.4	3.2	3.8	6.3	2.8	-0.4	-3.1	1.6	1.3	-3.5	4.8	7.9	13.7	2.8	5.9	5.1	6.3
Sep-20	1.6	1.8	1.5	4.3	8.3	2.7	0.0	-3.1	2.1	1.6	-3.8	5.4	6.4	11.3	2.2	6.0	5.9	6.1
Oct-20	0.6	0.4	0.8	3.0	4.4	2.4	1.0	-0.9	2.5	1.2	-2.6	3.9	7.5	13.2	2.6	8.2	6.8	9.1
Nov-20	-0.6	-3.3	1.2	2.9	3.9	2.4	1.2	-0.5	2.5	0.8	-4.0	4.3	8.0	13.8	3.0	7.4	5.4	8.6
Dec-20	0.6	-1.8	2.2	2.0	2.1	1.9	1.4	-0.1	2.5	2.4	-1.9	5.4	7.7	13.1	3.1	7.4	5.7	8.5
Weights 2017/18	100.0	27.7	72.3	100.0	23.1	76.9	100.0	29.9	70.1	100.0	30.2	69.8	100.0	33.7	66.3	100.0	27.0	73.0
Jan-21	2.0	-0.9	3.3	3.2	1.3	3.9	2.4	-0.6	4.2	2.7	-2.4	5.5	5.7	10.2	2.2	7.5	8.3	7.3
Feb-21	1.4	-1.4	2.8	2.3	1.3	2.8	3.4	2.2	4.2	2.6	-1.9	5.2	4.9	8.5	2.4	8.2	9.8	7.8
Mar-21	0.6	-1.7	1.8	1.2	1.2	1.3	5.1	5.6	4.7	3.8	-0.3	6.3	4.7	6.7	3.7	6.6	9.5	5.6
Apr-21	-0.1	-1.8	0.9	2.7	4.2	2.1	3.5	3.9	3.5	3.1	1.2	4.3	3.8	5.6	2.9	5.4	7.2	4.9
May-21	-0.2	-1.7	0.7	3.1	4.0	2.8	4.3	4.2	4.6	1.7	1.0	2.4	4.0	7.6	2.1	5.0	7.3	4.5
Jun-21	0.4	0.1	0.5	3.4	3.7	3.3	4.9	7.3	4.0	2.5	3.3	2.3	3.7	5.8	2.9	4.7	7.0	4.2
Jul-21	0.0	-1.6	0.6	2.8	3.6	2.5	7.4	13.5	4.6	2.8	3.2	2.7	3.3	3.9	3.7	4.8	7.6	3.9
Aug-21	-0.2	-4.2	1.2	2.1	1.0	2.4	8.0	12.7	5.5	2.6	2.5	2.4	4.4	3.8	5.1	4.9	6.1	4.4
Sep-21	1.5	-1.9	2.5	1.7	-0.3	2.3	7.6	12.6	5.0	2.7	3.1	2.0	5.1	5.0	5.1	4.9	5.9	4.4
Oct-21	2.2	-1.7	3.6	2.7	1.5	3.0	6.6	9.6	5.2	3.0	2.6	2.8	5.1	5.4	4.9	3.0	5.3	1.8
Nov-21	2.7	0.7	2.8	3.8	4.3	3.7	6.3	8.9	5.2	3.6	4.5	2.5	4.1	3.9	4.3	3.6	7.4	1.7
Dec-21	2.4	1.8	2.1	4.8	6.1	4.4	7.0	10.2	5.8	3.2	4.1	2.3	2.7	1.7	3.8	3.2	7.7	1.2
Jan-22	2.2	3.4	1.8	3.2	4.9	2.7	6.4	12.3	4.0	2.9	4.9	2.1	4.5	3.8	5.0	4.1	5.9	3.3
Feb-22	2.6	3.9	2.2	3.0	4.4	2.6	5.8	12.2	3.1	3.1	5.9	1.9	3.4	2.6	3.8	3.4	4.3	3.1
Mar-22	2.9	5.3	2.0	3.2	4.1	3.0	5.5	12.6	2.4	2.1	5.6	0.6	3.0	2.6	3.3	3.8	5.5	3.1
Apr-22	3.6	5.0	3.0	3.6	6.5	2.7	7.5	14.4	4.5	1.5	3.3	0.8	3.2	4.0	2.8	4.8	9.0	3.1
May-22	3.2	4.0	2.9	4.9	8.3	3.9	6.5	12.4	3.9	2.0	2.0	2.0	2.9	2.0	3.3	5.1	7.1	4.3
Jun-22	4.2	5.3	3.7	5.9	8.1	5.2	5.3	8.9	3.7	2.2	2.4	2.2	3.0	3.7	2.6	5.2	7.2	4.5

Source: National Bureau of Statistics



Consolidated Zonal Economic Performance Report

Annex 6: Agent Banking Transactions in Tanzania

Region	Quarter ending														
	Jun-21			Sep-21			Dec-21			Mar-22			Jun-22 ^p		
	Number of agents	Value (Millions of TZS)		Number of agents	Value (Millions of TZS)		Number of agents	Value (Millions of TZS)		Number of agents	Value (Millions of TZS)		Number of agents	Value (Millions of TZS)	
Cash deposit		Cash withdrawal	Cash deposit		Cash withdrawal	Cash deposit		Cash withdrawal	Cash deposit		Cash withdrawal	Cash deposit		Cash withdrawal	
Arusha	3,928	610,944.0	141,147.1	4,148	841,700.7	201,411.8	3,944	873,973.7	236,512.7	3,944	744,186.0	189,195.4	4,512	873,044.3	249,922.8
Coast	1,033	190,144.3	65,795.1	1,060	248,815.7	95,259.3	1,078	282,043.1	113,662.5	1,078	236,230.5	87,107.6	1,333	253,554.2	127,582.8
Dar es Salaam	14,216	2,305,828.5	594,411.2	15,285	2,954,081.2	916,290.2	16,059	3,499,477.6	1,132,182.5	16,059	3,337,917.8	940,702.7	19,698	3,880,335.6	1,241,469.2
Dodoma	2,497	439,807.9	131,371.2	2,659	539,042.3	187,333.2	2,676	604,840.9	220,029.0	2,676	512,478.1	166,930.2	3,292	578,480.8	235,878.9
Geita	599	312,035.0	78,929.2	636	388,380.4	100,622.7	657	425,990.3	113,789.7	657	396,725.3	97,841.6	802	455,580.3	134,069.8
Iringa	1,198	271,038.6	82,098.2	1,205	324,529.7	115,907.3	1,217	382,569.6	136,772.8	1,217	361,665.0	105,074.8	1,480	364,481.4	141,444.5
Kagera	1,046	393,336.2	73,621.4	1,054	504,181.6	104,304.4	1,041	502,163.6	113,170.7	1,041	445,265.0	94,693.1	1,211	616,365.2	145,633.7
Katavi	180	54,386.4	21,075.3	198	74,561.2	33,425.7	204	82,110.6	34,988.1	204	61,366.5	27,173.7	251	88,042.8	57,227.8
Kigoma	571	178,090.1	41,262.7	580	236,283.6	56,190.9	627	234,223.5	61,845.3	627	197,733.0	47,969.7	792	231,439.2	77,252.5
Kilimanjaro	1,770	310,472.4	70,884.9	1,851	419,364.6	96,418.8	1,881	497,110.7	121,483.7	1,881	443,452.0	96,112.3	2,224	485,592.0	127,530.1
Lindi	594	84,190.6	33,484.2	611	135,343.9	76,395.2	629	163,114.7	103,193.7	629	104,560.1	43,797.5	763	103,834.4	72,904.7
Manyara	536	136,845.8	61,274.9	544	211,880.3	101,293.1	560	247,983.4	98,579.1	560	185,744.2	69,789.7	674	187,173.2	98,445.0
Mara	939	205,104.9	52,250.2	918	269,824.6	72,650.7	935	295,608.1	83,308.1	935	261,068.1	69,588.6	1,102	312,967.6	96,216.7
Mbeya	2,344	456,865.5	151,663.0	2,410	612,443.9	209,507.3	2,559	712,513.5	255,297.3	2,559	588,419.1	190,853.1	3,047	666,356.0	270,839.3
Morogoro	2,054	386,368.6	121,776.1	2,139	522,012.8	199,487.5	2,151	581,985.0	236,430.1	2,151	486,843.0	162,962.6	2,644	529,187.7	243,663.6
Mtwara	907	132,804.3	42,617.4	939	186,327.6	72,572.5	985	270,877.6	148,096.5	985	172,322.3	61,669.8	1,197	163,597.6	89,579.7
Mwanza	3,415	604,866.4	159,240.4	3,518	749,381.2	215,500.3	3,471	845,503.2	246,870.0	3,471	774,715.6	207,789.2	4,168	910,537.4	287,571.2
Njombe	935	244,201.3	87,325.8	958	312,244.1	128,904.1	1,001	375,990.7	162,391.9	1,001	334,956.0	116,386.2	1,217	361,108.1	164,171.2
Rukwa	475	100,370.9	33,338.0	167	121,330.1	44,014.0	180	127,297.5	52,429.0	180	96,699.6	35,818.6	288	131,009.4	64,505.9
Ruvuma	784	189,026.7	59,853.2	474	282,544.3	102,150.2	485	354,090.1	150,354.2	485	275,849.2	99,485.3	566	272,348.3	146,363.8
Shinyanga	1,176	552,864.6	128,222.0	852	708,957.2	170,412.5	888	789,573.5	185,678.2	888	752,239.9	153,084.1	1,084	834,625.2	213,712.7
Simiyu	374	62,869.5	22,303.0	1,150	87,574.5	29,120.6	1,202	84,282.7	27,569.1	1,202	69,095.7	24,019.3	1,441	83,796.4	32,259.0
Singida	576	124,168.6	33,431.0	393	183,879.4	61,446.6	409	194,408.2	60,528.4	409	149,562.8	39,253.2	475	180,064.5	65,106.6
Songwe	512	200,531.4	56,680.5	587	299,827.0	92,741.9	584	335,890.5	111,890.7	584	260,018.7	77,796.9	700	299,209.1	123,692.2
Tabora	979	183,323.8	64,828.7	575	250,099.8	101,702.9	583	261,745.5	102,992.6	583	191,936.1	72,578.7	663	232,007.0	120,003.3
Tanga	1,048	272,937.7	65,503.2	964	332,396.1	89,228.3	968	384,668.5	98,934.0	968	312,017.1	77,840.3	1,132	365,278.2	111,981.4
Pemba	130	15,826.6	6,680.8	1,042	32,604.6	16,772.7	1,080	32,218.1	14,330.0	1,080	30,176.2	9,588.6	1,292	47,135.0	14,312.7
Unguja	716	105,698.5	32,526.2	827	131,934.7	44,683.0	869	159,297.1	57,495.7	869	152,437.1	51,007.1	1,243	154,136.5	67,948.2
Total	45,532	9,124,949.2	2,513,594.9	47,744	11,961,547.3	3,735,747.9	48,923	13,601,551.6	4,480,805.7	48,923	11,935,679.8	3,416,109.9	59,291	13,661,287.5	4,821,289.0

Source: Bank of Tanzania

Note: p denotes provisional data



Consolidated Zonal Economic Performance Report

Annex 7a: Value of Selected Manufactured Commodities by Zone and Type

South Eastern Zone

Dar es Salaam Zone

Commodity	Billions of TZS				Commodity	Billions of TZS			
	2018/19	2019/20	2020/21 ^r	2021/22 ^p		2018/19	2019/20	2020/21 ^r	2021/22 ^p
Rolled steel	159.3	233.5	331.8	518.0	Wheat flour	665.7	745.0	769.9	833.5
Beverages	179.7	216.0	264.6	365.1	Cement	913.6	621.4	644.8	685.9
Ceramics	166.5	176.9	258.8	339.1	Bottled beer	611.9	259.4	293.3	451.1
Cement	214.6	226.6	239.0	313.9	Vegetable oils and fats	695.9	576.6	507.9	507.1
Washing powder	56.4	65.5	93.2	88.9	Soap and laundry / toilet detergents	227.1	332.2	400.1	379.6
Electrical cable	46.2	81.1	76.5	83.9	Rolled steel	265.6	210.0	272.2	462.1
Gypsum board	32.0	23.4	32.6	62.8	Cigarettes	303.9	437.0	366.5	507.3
Shoes	20.4	35.3	45.6	50.1	Corrugated Iron sheets	280.4	282.6	408.2	449.2
Diapers	24.1	31.9	27.6	43.9	Soft drinks	614.2	365.0	358.6	451.9
Salt	28.5	31.9	34.7	42.6	Paints	147.5	201.3	172.7	192.0
Plastic articles	13.1	13.6	19.7	26.6	Spirits	197.8	190.5	203.3	188.2
Packaging material	15.3	3.1	6.5	14.7	Foam mattresses	158.6	120.3	139.9	178.5
Gypsum Powder	2.7	2.7	2.4	9.1	Plastic articles	185.3	164.1	208.3	211.8
Sodium silicate	6.0	1.6	5.4	7.2	Glass	157.4	115.6	167.7	191.2
Nail	4.2	1.1	3.1	4.8	Woven fabrics	44.6	37.8	28.9	67.8
Corrugated iron sheets	14.4	25.7	32.7	2.8	Standardized milk	46.7	3.1	5.9	5.4
Transformer	0.0	3.1	4.2	2.5	Others	1,732.2	691.0	801.7	858.4
Instant coffee	0.0	0.1	0.0	0.1	Total	7,248.2	5,352.8	5,749.8	6,621.2
Leather	0.1	0.6	0.1	0.0					
Total	983.6	1,173.1	1,478.3	1,976.1					

Source: National Bureau of Statistics and respective Industries

Note: p, denotes provisional data; and r, revised data



Consolidated Zonal Economic Performance Report

Annex 7b: Value of Selected Manufactured Commodities by Zone and Type

Lake Zone

Commodity	Billions of TZS			
	2018/19	2019/20	2020/21 ^r	2021/22 ^p
Beer	252.7	220.9	204.6	243.2
Sugar	98.3	162.6	157.4	189.0
Soft Drinks	244.6	130.8	138.3	174.5
Vegetable oils and fats	0.0	25.7	31.6	48.5
Rolled Steel	17.4	19.5	19.2	47.1
Foam mattresses	32.7	33.4	36.0	41.1
Coffee	0.6	11.0	4.9	3.3
Milk	2.3	1.9	2.2	2.5
Timber	3.3	2.5	2.1	0.8
Tea	3.6	5.5	4.0	0.6
Total	655.3	613.7	600.2	750.7

Central Zone

Commodity	Billions of TZS			
	2018/19	2019/20	2020/21 ^r	2021/22 ^p
Cured tobacco	178.6	122.9	206.1	368.0
Sugar	184.1	226.0	271.4	341.7
Vegetable oils and fats	28.7	43.3	49.4	97.5
Milled rice	0.0	14.7	47.4	61.5
Knitted fabrics	45.2	46.2	49.6	48.1
Sunflower de oiled cake	0.0	3.8	6.3	32.9
Mattresses	0.0	0.0	8.7	8.4
Textile bags	1.5	2.4	3.8	6.8
Wine	4.7	3.5	3.2	5.8
Plastic articles	0.0	1.8	2.1	2.4
Sisal bags	0.0	0.0	1.1	1.9
Textiles	0.0	12.4	17.6	0.0
Other textiles	0.0	0.1	0.4	0.0
Others	8.7	8.6	9.9	8.2
Total	451.5	485.7	677.0	983.1

Source: National Bureau of Statistics and respective Industries

Note: p, denotes provisional data; and r, revised data



Consolidated Zonal Economic Performance Report

Annex 7c: Value of Selected Manufactured Commodities by Zone and Type

Southern Highlands Zone

Northern Zone

Billions of TZS					Billions of TZS				
Commodity	2018/19	2019/20	2020/21 ^r	2021/22 ^p	Commodity	2018/19	2019/20	2020/21 ^r	2021/22 ^p
Bottled beer	185.0	185.3	271.7	256.1	Beverages	272.2	261.2	325.8	305.3
Soft drinks (soda)	113.9	122.3	133.8	138.4	Sugar	223.8	234.0	341.4	266.6
Made (Black) tea	95.4	99.1	116.4	121.1	Textile	140.8	159.6	151.1	266.5
Cement	80.3	80.5	81.2	91.6	Food products	140.8	135.0	129.5	153.5
Paper kraft	94.9	81.6	57.7	62.8	Cement	215.0	214.3	253.8	151.4
Standadized milk	3.8	6.5	7.2	7.6	Coffee products	30.1	33.0	72.1	60.0
Prywood	3.7	4.1	7.0	7.3	Rolled steel	64.1	56.5	66.9	59.7
Wattle extracts	5.9	5.9	5.6	6.3	Eletrical goods	21.2	24.1	21.8	43.6
Pyrethram	0.3	0.6	0.9	1.0	Mattresses	9.2	17.5	26.1	41.3
Other	7.8	7.5	9.9	10.2	Soap and toilet detergents	0.0	0.0	32.1	14.6
Total	591.1	593.4	691.4	702.4	Others	177.2	184.3	179.2	232.0
					Total	1,294.4	1,319.5	1,599.8	1,594.5

Source: National Bureau of Statistics and respective Industries

Note: p, denotes provisional data; and r, revised data